



Bilag til evalueringsrapport vedrørende

**Repetitiv Transkraniel Magnetisk
Stimulation til behandling af pati-
enter med behandlingsresistent
moderat til svær unipolar depres-
sion**

Behandlingsrådet

Bilag

Bilag er et tillæg til rapporten vedr. Repetitiv Transkraniel Magnetisk Stimulation til behandling af patienter med behandlingsresistent moderat til svær unipolar depression som kan ses på Behandlingsrådets hjemmeside.

Oplysninger om dokumentet

Godkendelses- dato:	Dokumentnummer:	Versionsnummer:
31. oktober 2024	11074	1.0

Versionsnr.:	Dato:	Ændring:
1.0	31. oktober 2024	Godkendt af Behandlingsrådet

Indhold

Indhold	3
1 Bilag til litteratursøgning	4
1.1 Søgehistorik – HTA'er og guidelines	4
1.2 Prismadiagrammer	9
2 Bilag til klinisk effekt og sikkerhed	12
2.1 Søgehistorik klinisk effekt og sikkerhed – sekundær litteratur	12
2.2 Søgehistorik klinisk effekt og sikkerhed – primær litteratur	16
2.3 Vurdering af evidenskvalitet - klinisk effekt og sikkerhed	23
3 Bilag til patientperspektivet	27
3.1 Litteraturgennemgang for Patientperspektivet	27
4 Bilag til Organisatoriske Implikationer	42
4.1 Litteraturgennemgang for Organisatoriske Implikationer	42
5 Bilag til sundhedsøkonomi	48
5.1 Litteraturgennemgang for Sundhedsøkonomi	48
5.2 Omkostninger forbundet med rTMS udtrappingsforløb	54
5.3 Omkostninger forbundet med ECT-behandling	55
5.4 Sandsynligheden for effekt af ECT-behandling anvendt i følsomhedsanalyse (scenarie 1)	57
5.5 Resultater af one-way analyser	58
5.6 Budgetkonsekvensanalyse	59

1

Bilag til litteratursøgning

1.1 Søgehistorik – HTA'er og guidelines

Databaser og resultater

Database	Platform	Resultat	Dato
Diverse Internetkilder	Se nedenfor	5	09.01.2024
PubMed	PubMed.gov	27	09.01.2024
Embase	Embase.com	66	09.01.2024
I alt		98	
÷ dubletter vha. EndNote		79	

Internetkilder

Søgeord: **Engelsk:** TMS, transcranial magnetic stimulation, depression, **Norsk:** Transkraniell magnetisk Stimulering, TMS, depresjon, **Svensk:** Transkraniell magnetstimulering, TMS, depression, **Dansk:** Transkraniell magnetisk stimulering, TMS, depression

Informationskilde	Platform	Resultat	Dato
INATHA – International HTA database	https://database.inahta.org/	3	11.01.2024
NICE (UK) – National Institute for Health and Care Excellence	www.nice.org.uk/	0	11.01.2024
CRD – Centre for Reviews and Dissemination	https://www.crd.york.ac.uk/CRDWeb/	0	11.01.2024
CADTH – Canadian Agency for Drugs and Technologies in Health	https://www.cadth.ca/	1	11.01.2024
SHTG – Scottish Health Technologies Group	https://shtg.scot/	0	11.01.2024
EUnetHTA – European Network for Health Technology Assessment	https://www.eunetha.eu/	0	11.01.2024
AHRQ – Agency for Healthcare Research and Quality	https://www.ahrq.gov/research/findings/ta/index.html	0	11.01.2024
<i>Norge</i>			
NIPH – Norwegian Institute of Public Health	https://www.fhi.no/en/	0	11.01.2024
Helsebiblioteket			
	https://www.helsebiblioteket.no/	0	11.01.2024
<i>Sverige</i>			
Swedish Council on Health Technology Assessment	https://www.sbu.se/	1	11.01.2024
Nationellt kliniskt kunskapsstöd	https://www.nationelltklinisktkunskapsstod.se/		
	https://www.vgregion.se/halsa-och-varld/vardgivarwebben/utveckling--uppfoljning/htacentrum/		
	https://janusinfo.se/	0	11.01.2024
HTA-Centrum	https://www.tlv.se/		
		0	11.01.2024
Janusinfo			
		0	11.01.2024

TLV Tandvårds- och läkemedelsförmånsverket		0	11.01.2024
<i>Danmark</i>			
Bibliotek.dk	https://bibliotek.dk/	1	11.01.2024
I alt		6	
÷ dubletter		5	

Resultater med links

1.1.2	Informationskilde	1.1.3	Titel
INATHA – International HTA database		Health Technology Wales (HTW): Transcranial magnetic stimulation for the treatment of depression, 2021	
		Ontario Health: Repetitive Transcranial Magnetic Stimulation for People With Treatment-Resistant Depression, 2021	
		Swedish Agency for Health Technology Assessment and Assessment of Social Services (SBU): Treatment of depression with transcranial magnetic stimulation using an H-coil (dTMS), 2020	
1.1.4	CADTH – Canadian Agency for Drugs and Technologies in Health	CADTH: Repetitive Transcranial Magnetic Stimulation for Patients with Depression: A Review of Clinical Effectiveness, Cost-Effectiveness and Guidelines – An Update, 2019	
1.1.5	<i>Sverige</i>	SBU: Behandling av depression med transkraniell magnetstimulering med H-spole (dTMS): en uppdatering, 2020	
1.1.6	<i>Danmark</i>	Dansk Psykiatrisk Selskab: National Klinisk Retningslinje for vanskeligt behandlelig depression, 2020	

PubMed

Search	Query	Results
#15	Search: ((((((("Depression"[Mesh]) OR ("Depressive Disorder"[Mesh])) OR (depressi*[Title/Abstract] OR TRD[Title/Abstract] OR MDD[Title/Abstract] OR dysthymi*[Title/Abstract] OR melancholia*[Title/Abstract] OR involuntal psychos*[Title/Abstract] OR unipolar*[Title/Abstract])) AND (((("Transcranial Magnetic Stimulation"[Mesh]) OR ((transcranial*[Title/Abstract] OR transcranial*[Title/Abstract]) AND magnetic*[Title/Abstract]) OR TMS[Title/Abstract] OR	27

rTMS[Title/Abstract] OR aTMS[Title/Abstract] OR pTMS[Title/Abstract] OR sTMS[Title/Abstract] OR dTMS[Title/Abstract]) OR ((theta*[Title/Abstract] AND stimu*[Title/Abstract]) OR TBS[Title/Abstract] OR cTBS[Title/Abstract] OR iTBS[Title/Abstract] OR bITBS[Title/Abstract])) OR (coil*[Title/Abstract] AND (double cone*[Title/Abstract] OR figure[Title/Abstract] OR butterfly[Title/Abstract] OR H[Title/Abstract])) OR (Deep TMS*[Title/Abstract] OR Magpro*[Title/Abstract] OR Magstim*[Title/Abstract])) AND (("Guideline"[pt] OR "practice guideline"[pt] OR "consensus development conference"[pt] OR "consensus development conference, NIH"[pt] OR guideline*[ti] OR standards[ti] OR consensus*[ti] OR recommendat*[ti] OR guideline*[cn] OR standards[cn] OR consensus*[cn] OR recommendat*[cn] OR "practice guideline"*[tiab] OR "treatment guideline"*[tiab] OR "clinical guideline"*[tiab] OR "guideline recommendation"*[tiab] OR ("technology assessment"*[tiab] OR "technology overview"*[tiab] OR "technology appraisal"*[tiab] OR "Technology Assessment, Biomedical"[mh] OR HTA[tiab] OR HTAs[tiab])) AND ("2019"[Date - Publication] : "2024"[Date - Publication])) AND (Danish[Language] OR English[Language] OR Norwegian[Language] OR Swedish[Language]) Sort by: Publication Date

#14 Search: (((("Depression"[Mesh]) OR ("Depressive Disorder"[Mesh])) OR (depressi*[Title/Abstract] OR TRD[Title/Abstract] OR MDD[Title/Abstract] OR dysthymi*[Title/Abstract] OR melancholia*[Title/Abstract] OR involuntional psychos*[Title/Abstract] OR unipolar*[Title/Abstract])) AND (((("Transcranial Magnetic Stimulation"[Mesh]) OR ((transcranial*[Title/Abstract] OR trans-cranial*[Title/Abstract]) AND magnetic*[Title/Abstract]) OR TMS[Title/Abstract] OR rTMS[Title/Abstract] OR aTMS[Title/Abstract] OR pTMS[Title/Abstract] OR sTMS[Title/Abstract] OR dTMS[Title/Abstract])) OR ((theta*[Title/Abstract] AND stimu*[Title/Abstract]) OR TBS[Title/Abstract] OR cTBS[Title/Abstract] OR iTBS[Title/Abstract] OR bITBS[Title/Abstract])) OR (coil*[Title/Abstract] AND (double cone*[Title/Abstract] OR figure[Title/Abstract] OR butterfly[Title/Abstract] OR H[Title/Abstract])) OR (Deep TMS*[Title/Abstract] OR Magpro*[Title/Abstract] OR Magstim*[Title/Abstract])) AND (("Guideline"[pt] OR "practice guideline"[pt] OR "consensus development conference"[pt] OR "consensus development conference, NIH"[pt] OR guideline*[ti] OR standards[ti] OR consensus*[ti] OR recommendat*[ti] OR guideline*[cn] OR standards[cn] OR consensus*[cn] OR recommendat*[cn] OR "practice guideline"*[tiab] OR "treatment guideline"*[tiab] OR "clinical guideline"*[tiab] OR "guideline recommendation"*[tiab] OR ("technology assessment"*[tiab] OR "technology overview"*[tiab] OR "technology appraisal"*[tiab] OR "Technology Assessment, Biomedical"[mh] OR HTA[tiab] OR HTAs[tiab])) Sort by: Publication Date 72

#13 Search: ("Guideline"[pt] OR "practice guideline"[pt] OR "consensus development conference"[pt] OR "consensus development conference, NIH"[pt] OR guideline*[ti] OR standards[ti] OR consensus*[ti] OR recommendat*[ti] OR guideline*[cn] OR standards[cn] OR consensus*[cn] OR recommendat*[cn] OR "practice guideline"*[tiab] OR "treatment guideline"*[tiab] OR "clinical guideline"*[tiab] OR "guideline recommendation"*[tiab]) OR ("technology assessment"*[tiab] OR "technology overview"*[tiab] OR "technology appraisal"*[tiab] OR "Technology Assessment, Biomedical"[mh] OR HTA[tiab] OR HTAs[tiab]) Sort by: Publication Date 283,382

#12 Search: (((("Depression"[Mesh]) OR ("Depressive Disorder"[Mesh])) OR (depressi*[Title/Abstract] OR TRD[Title/Abstract] OR MDD[Title/Abstract] OR dysthymi*[Title/Abstract] OR melancholia*[Title/Abstract] OR involuntional psychos*[Title/Abstract] OR unipolar*[Title/Abstract])) AND (((("Transcranial Magnetic Stimulation"[Mesh]) OR ((transcranial*[Title/Abstract] OR trans-cranial*[Title/Abstract]) AND magnetic*[Title/Abstract]) OR TMS[Title/Abstract] OR rTMS[Title/Abstract] OR aTMS[Title/Abstract] OR pTMS[Title/Abstract] OR sTMS[Title/Abstract] OR dTMS[Title/Abstract])) OR ((theta*[Title/Abstract] AND

	stimul*[Title/Abstract] OR TBS[Title/Abstract] OR cTBS[Title/Abstract] OR iTBS[Title/Abstract] OR bITBS[Title/Abstract])) OR (coil*[Title/Abstract] AND (double cone*[Title/Abstract] OR figure[Title/Abstract] OR butterfly[Title/Abstract] OR H[Title/Abstract])))) OR (Deep TMS*[Title/Abstract] OR Magpro*[Title/Abstract] OR Magstim*[Title/Abstract])) Sort by: Publication Date	
#11	Search: (((("Transcranial Magnetic Stimulation"[Mesh]) OR (((transcranial*[Title/Abstract] OR trans-cranial*[Title/Abstract]) AND magnetic*[Title/Abstract]) OR TMS[Title/Abstract] OR rTMS[Title/Abstract] OR aTMS[Title/Abstract] OR pTMS[Title/Abstract] OR sTMS[Title/Abstract] OR dTMS[Title/Abstract])) OR ((theta*[Title/Abstract] AND stimul*[Title/Abstract]) OR TBS[Title/Abstract] OR cTBS[Title/Abstract] OR iTBS[Title/Abstract] OR bITBS[Title/Abstract])) OR (coil*[Title/Abstract] AND (double cone*[Title/Abstract] OR figure[Title/Abstract] OR butterfly[Title/Abstract] OR H[Title/Abstract])))) OR (Deep TMS*[Title/Abstract] OR Magpro*[Title/Abstract] OR Magstim*[Title/Abstract]) Sort by: Publication Date	<u>49,972</u>
#10	Search: Deep TMS*[Title/Abstract] OR Magpro*[Title/Abstract] OR Magstim*[Title/Abstract] Sort by: Publication Date	<u>215</u>
#9	Search: coil*[Title/Abstract] AND (double cone*[Title/Abstract] OR figure[Title/Abstract] OR butterfly[Title/Abstract] OR H[Title/Abstract]) Sort by: Publication Date	<u>4,407</u>
#8	Search: (theta*[Title/Abstract] AND stimul*[Title/Abstract]) OR TBS[Title/Abstract] OR cTBS[Title/Abstract] OR iTBS[Title/Abstract] OR bITBS[Title/Abstract] Sort by: Publication Date	<u>11,016</u>
#7	Search: ((transcranial*[Title/Abstract] OR trans-cranial*[Title/Abstract]) AND magnetic*[Title/Abstract]) OR TMS[Title/Abstract] OR rTMS[Title/Abstract] OR aTMS[Title/Abstract] OR pTMS[Title/Abstract] OR sTMS[Title/Abstract] OR dTMS[Title/Abstract] Sort by: Publication Date	<u>35,135</u>
#6	Search: "Transcranial Magnetic Stimulation"[Mesh] Sort by: Most Recent	<u>15,298</u>
#5	Search: (("Depression"[Mesh]) OR ("Depressive Disorder"[Mesh])) OR (depressi*[Title/Abstract] OR TRD[Title/Abstract] OR MDD[Title/Abstract] OR dysthymi*[Title/Abstract] OR melancholia*[Title/Abstract] OR involuntal psychos*[Title/Abstract] OR unipolar*[Title/Abstract]) Sort by: Publication Date	<u>560,525</u>
#3	Search: depressi*[Title/Abstract] OR TRD[Title/Abstract] OR MDD[Title/Abstract] OR dysthymi*[Title/Abstract] OR melancholia*[Title/Abstract] OR involuntal psychos*[Title/Abstract] OR unipolar*[Title/Abstract] Sort by: Publication Date	<u>514,226</u>
#2	Search: "Depressive Disorder"[Mesh] Sort by: Most Recent	<u>123,436</u>
#1	Search: "Depression"[Mesh] Sort by: Most Recent	<u>154,378</u>

Embase

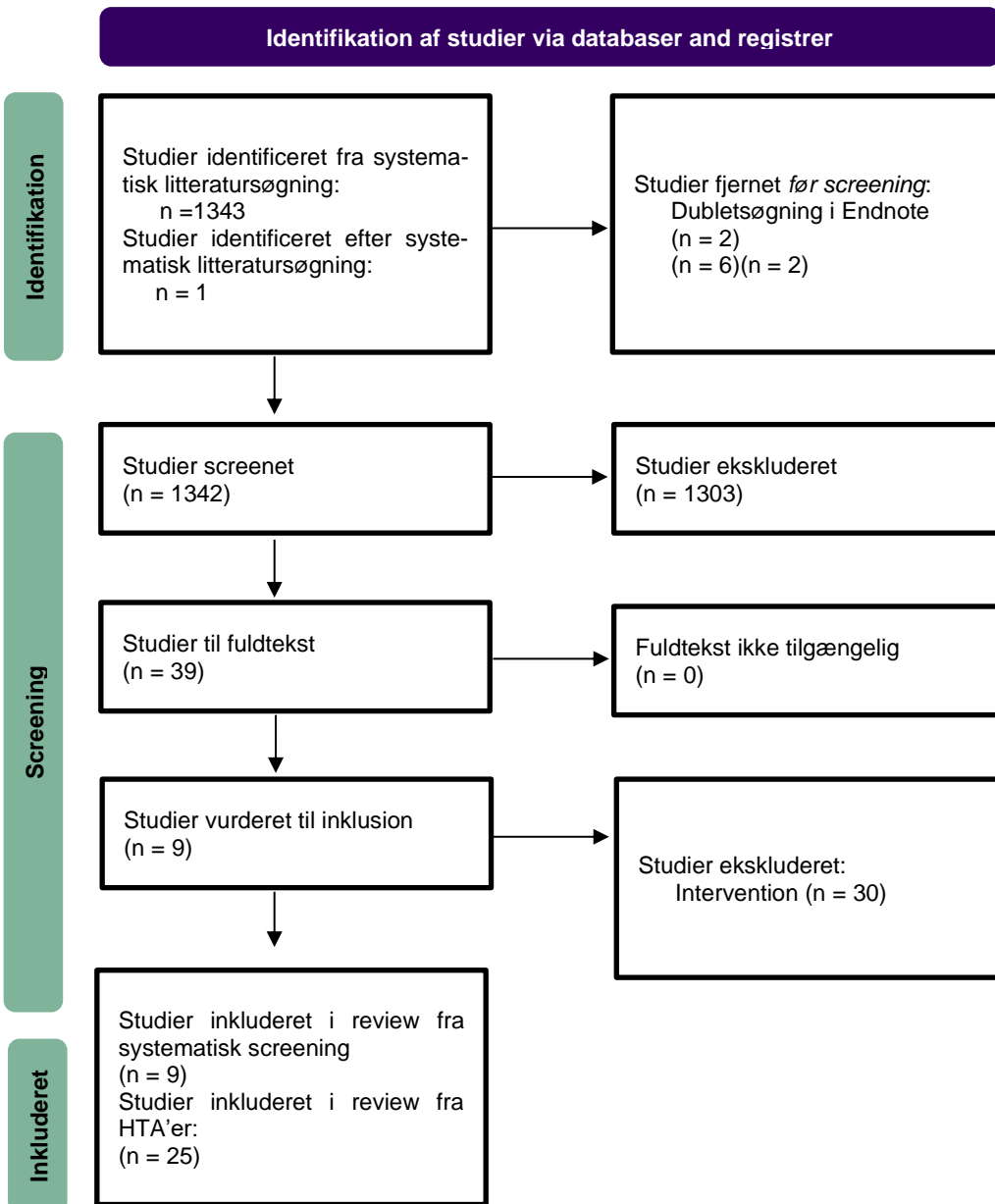
No.	Query	Results
#14	#13 NOT 'conference abstract'/it	66
#13	#10 AND #11 AND [2019-2024]/py AND ([danish]/lim OR [english]/lim OR [norwegian]/lim OR [swedish]/lim)	78

#12	#10 AND #11	161
#11	'biomedical technology assessment'/exp/mj OR 'technology assessment*':ti,ab,kw OR hta:ti,ab,kw OR htas:ti,ab,kw OR 'technology overview*':ti,ab,kw OR 'technology appraisal*':ti,ab,kw OR 'practice guideline'/exp/mj OR guideline*:ti,kw OR 'practice guideline*':ti,kw OR 'clinical guideline*':ti,kw OR guidance:ti,kw OR consensus:ti,kw OR recommendation*':ti,kw	364214
#10	#3 AND #9	8614
#9	#4 OR #5 OR #6 OR #7 OR #8	59811
#8	'deep tms*':ti,ab,kw OR magpro*':ti,ab,kw OR magstim*':ti,ab,kw	584
#7	(coil* NEAR/2 ('double cone*' OR figure OR butterfly OR h)):ti,ab,kw	823
#6	((theta* NEAR/3 stimu*):ti,ab,kw) OR tbs:ti,ab,kw OR ctbs:ti,ab,kw OR itbs:ti,ab,kw OR bltbs:ti,ab,kw	9737
#5	((((transcranial* OR 'trans-cranial*') NEAR/2 magnetic*):ti,ab,kw) OR tms:ti,ab,kw OR rtms:ti,ab,kw OR atms:ti,ab,kw OR ptms:ti,ab,kw OR stms:ti,ab,kw OR dtms:ti,ab,kw	46109
#4	'transcranial magnetic stimulation'/exp	32606
#3	#1 OR #2	930912
#2	depressi*':ti,ab,kw OR trd:ti,ab,kw OR mdd:ti,ab,kw OR dysthymi*':ti,ab,kw OR melancholia*':ti,ab,kw OR 'involuntal psychos*':ti,ab,kw OR unipolar*':ti,ab,kw	709009
#1	'depression'/exp	662671

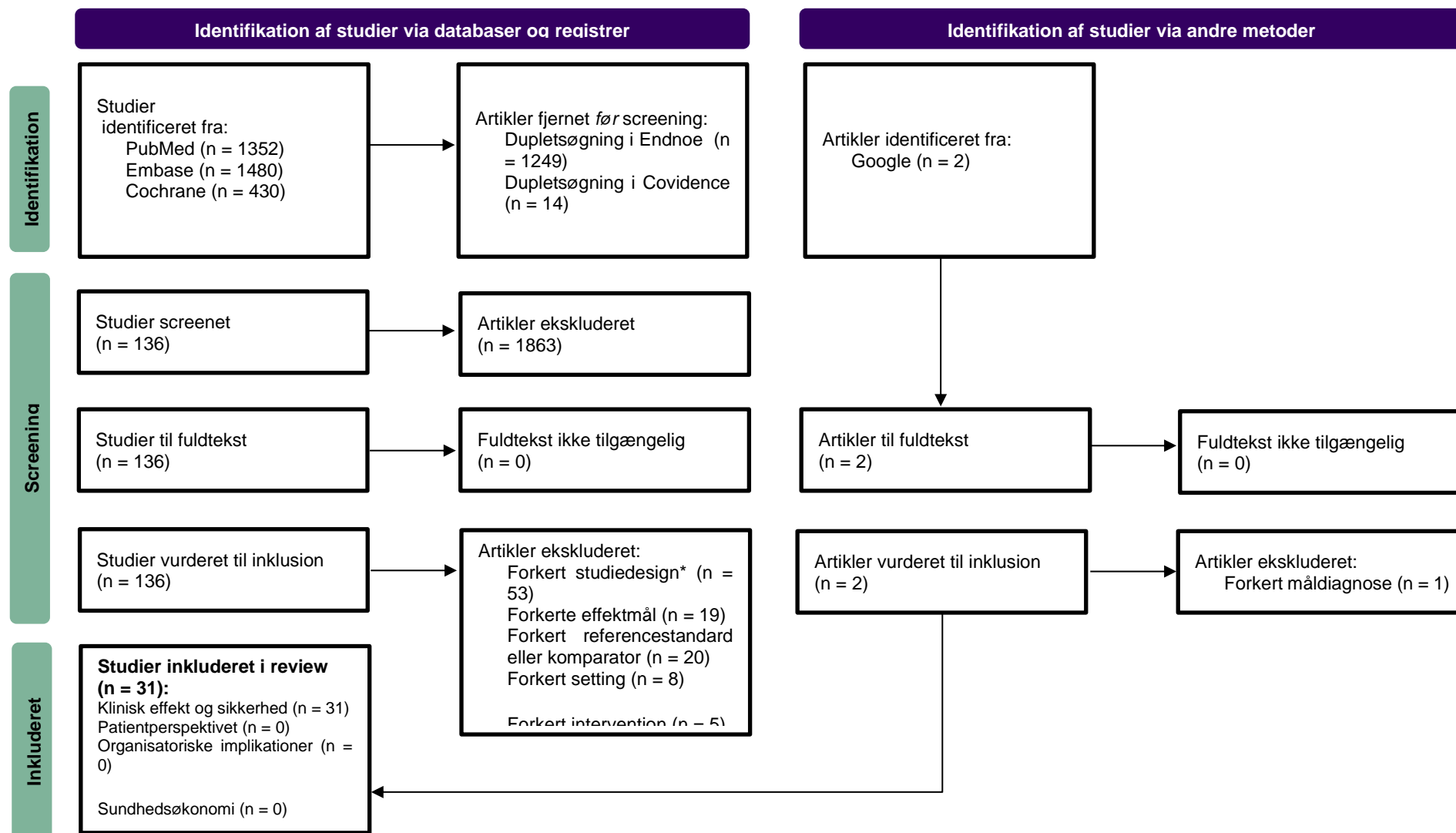
1.2 Prismadiagrammer

Nedenfor præsenteres to forskellige prismadiagrammer. Det første kan bruges, når kilderne er databaser/register. Den anden kan bruges, når kilderne er en kombination mellem databaser/register og andre metoder.

1.2.1 Sekundærlitteratur - Skabelon



1.2.2 Primærlitteratur - Skabelon



2

Bilag til klinisk effekt og sikkerhed

2.1 Søgehistorik klinisk effekt og sikkerhed – sekundær litteratur

Databaser og resultater

Tabel 1 - Resultater af søgning efter sekundær litteratur til belysning af Klinisk Effekt og Sikkerhed.

Database	Platform	Resultat	Dato
PubMed	PubMed.gov	219	07.03.2024
Embase	Embase.com	295	07.03.2024
Cochrane Library	Wiley	0	07.03.2024
I alt		514	
÷ dubletter vha. EndNote		328	

PubMed

Search	Query	Results
#6	Search: (((("Depression"[Mesh]) OR ("Depressive Disorder"[Mesh])) OR (depressi*[Title/Abstract] OR TRD[Title/Abstract] OR MDD[Title/Abstract] OR dysthymi*[Title/Abstract] OR melancholia*[Title/Abstract] OR involuntional psychos*[Title/Abstract] OR unipolar*[Title/Abstract])) AND (((("Transcranial Magnetic Stimulation"[Mesh]) OR ((transcranial*[Title/Abstract] OR trans-cranial*[Title/Abstract]) AND magnetic*[Title/Abstract]) OR TMS[Title/Abstract] OR rTMS[Title/Abstract] OR aTMS[Title/Abstract] OR pTMS[Title/Abstract] OR sTMS[Title/Abstract] OR dTMS[Title/Abstract])) OR ((theta*[Title/Abstract] AND stimul*[Title/Abstract]) OR TBS[Title/Abstract] OR cTBS[Title/Abstract] OR iTBS[Title/Abstract] OR bITBS[Title/Abstract])) OR (coil*[Title/Abstract] AND (double cone*[Title/Abstract] OR figure[Title/Abstract] OR butterfly[Title/Abstract] OR H[Title/Abstract]))) OR (Deep TMS*[Title/Abstract] OR Magpro*[Title/Abstract] OR Magstim*[Title/Abstract])) AND ("systematic"[filter] OR "meta-analysis"[pt] OR "meta-analysis as topic"[mh] OR "meta analy*[tw] OR metanaly*[tw] OR metaanaly*[tw] OR "met analy*[tw] OR "integrative research"[tiab] OR "integrative review*[tiab] OR "integrative overview*[tiab] OR "research integration*[tiab] OR "research overview*[tiab] OR "collaborative review*[tiab] OR "collaborative overview*[tiab] OR "systematic review"[pt] OR "systematic reviews as topic"[mh] OR "systematic review*[tiab] OR "comparative efficacy"[tiab] OR "comparative effectiveness"[tiab] OR "outcomes research"[tiab] OR "indirect comparison*[tiab] OR "Bayesian comparison"[tiab] OR ("indirect treatment"[tiab] OR "mixed-treatment"[tiab]) AND comparison*[tiab]) OR Embase*[tiab] OR Cinahl*[tiab] OR "systematic	219

	overview*[tiab] OR "methodological overview"*[tiab] OR "methodologic overview"*[tiab] OR "methodological review"*[tiab] OR "methodologic review"*[tiab] OR "quantitative review"*[tiab] OR "quantitative overview"*[tiab] OR "quantitative syntheses"*[tiab] OR "pooled analy"*[tiab] OR Cochrane[tiab] OR Medline[tiab] OR Pubmed[tiab] OR Medlars[tiab] OR handsearch*[tiab] OR "hand search"*[tiab] OR "meta-regression"*[tiab] OR metaregression*[tiab] OR "data syntheses"*[tiab] OR "data extraction"[tiab] OR "data abstraction"*[tiab] OR "mantel haenszel"[tiab] OR peto[tiab] OR "der-simonian"[tiab] OR dersimonian[tiab] OR "fixed effect"*[tiab] OR "multiple treatment comparison"[tiab] OR "mixed treatment meta-analys"*[tiab] OR "umbrella review"*[tiab] OR (("multiple paramet"*[tiab] AND ("evidence synthesis"[tiab])) OR (("multi-paramet"*[tiab] AND ("evidence synthesis"[tiab])) OR ((multiparameter*[tiab] AND ("evidence synthesis"[tiab])) OR "Cochrane Database Syst Rev"[Journal])) AND (("2021"[Date - Publication] : "2024"[Date - Publication]) AND (Danish[Language] OR English[Language] OR Norwegian[Language] OR Swedish[Language])) Sort by: Publication Date	
#5	Search: #3 AND #4 Sort by: Publication Date	<u>548</u>
#4	Search: "systematic"[filter] OR "meta-analysis"[pt] OR "meta-analysis as topic"[mh] OR "meta analy"*[tw] OR metanaly*[tw] OR metaanaly*[tw] OR "met analy"*[tw] OR "integrative research"[tiab] OR "integrative review"*[tiab] OR "integrative overview"*[tiab] OR "research integration"*[tiab] OR "research overview"*[tiab] OR "collaborative review"*[tiab] OR "collaborative overview"*[tiab] OR "systematic review"[pt] OR "systematic reviews as topic"[mh] OR "systematic review"*[tiab] OR "comparative efficacy"[tiab] OR "comparative effectiveness"[tiab] OR "outcomes research"[tiab] OR "indirect comparison"*[tiab] OR "Bayesian comparison"[tiab] OR (("indirect treatment"[tiab] OR "mixed-treatment"[tiab]) AND comparison*[tiab]) OR Embase*[tiab] OR Cinahl*[tiab] OR "systematic overview"*[tiab] OR "methodological overview"*[tiab] OR "methodologic overview"*[tiab] OR "methodological review"*[tiab] OR "methodologic review"*[tiab] OR "quantitative review"*[tiab] OR "quantitative overview"*[tiab] OR "quantitative syntheses"*[tiab] OR "pooled analy"*[tiab] OR Cochrane[tiab] OR Medline[tiab] OR Pubmed[tiab] OR Medlars[tiab] OR handsearch*[tiab] OR "hand search"*[tiab] OR "meta-regression"*[tiab] OR metaregression*[tiab] OR "data syntheses"*[tiab] OR "data extraction"[tiab] OR "data abstraction"*[tiab] OR "mantel haenszel"[tiab] OR peto[tiab] OR "der-simonian"[tiab] OR dersimonian[tiab] OR "fixed effect"*[tiab] OR "multiple treatment comparison"[tiab] OR "mixed treatment meta-analys"*[tiab] OR "umbrella review"*[tiab] OR (("multiple paramet"*[tiab] AND ("evidence synthesis"[tiab])) OR (("multi-paramet"*[tiab] AND ("evidence synthesis"[tiab])) OR ((multiparameter*[tiab] AND ("evidence synthesis"[tiab])) OR "Cochrane Database Syst Rev"[Journal] Sort by: Publication Date	<u>675,148</u>
#3	Search: #1 AND #2 Sort by: Publication Date	<u>4,434</u>
#2	Search: (((("Transcranial Magnetic Stimulation"[Mesh]) OR (((transcranial*[Title/Abstract] OR trans-cranial*[Title/Abstract]) AND magnetic*[Title/Abstract]) OR TMS[Title/Abstract] OR rTMS[Title/Abstract] OR aTMS[Title/Abstract] OR pTMS[Title/Abstract] OR sTMS[Title/Abstract] OR dTMS[Title/Abstract])) OR ((theta*[Title/Abstract] AND stimu*[Title/Abstract]) OR TBS[Title/Abstract] OR cTBS[Title/Abstract] OR iTBS[Title/Abstract] OR bITBS[Title/Abstract])) OR (coil*[Title/Abstract] AND (double cone*[Title/Abstract] OR figure[Title/Abstract] OR butterfly[Title/Abstract] OR H[Title/Abstract]))) OR (Deep TMS*[Title/Abstract] OR Magpro*[Title/Abstract] OR Magstim*[Title/Abstract]) Sort by: Publication Date	<u>50,606</u>
#1	Search: (("Depression"[Mesh]) OR ("Depressive Disorder"[Mesh])) OR (depressi*[Title/Abstract] OR TRD[Title/Abstract] OR MDD[Title/Abstract] OR dysthymi*[Title/Abstract])	<u>566,250</u>

OR melancholia*[Title/Abstract] OR involuntal psychos*[Title/Abstract] OR unipolar*[Title/Abstract]) Sort by: Publication Date

Embase

No.	Query	Results
#14	#13 NOT ('conference abstract'/it OR 'conference paper'/it OR 'conference review'/it)	295
#13	#10 AND #11 AND ([danish]/lim OR [english]/lim OR [norwegian]/lim OR [swedish]/lim) AND [2019-2024]/py	370
#12	#10 AND #11	960
#11	'meta analysis'/exp OR 'meta analysis (topic)'/exp OR 'systematic review'/exp OR 'systematic review (topic)'/exp OR ((systematic* NEAR/3 (review* OR overview*)):ti,ab,kw) OR ((methodologic* NEAR/3 (review* OR overview*)):ti,ab,kw) OR ((quantitative NEAR/3 (review* OR overview* OR syntheses*)):ti,ab,kw) OR ((research NEAR/3 (integrati* OR overview*)):ti,ab,kw) OR ((integrative NEAR/3 (review* OR overview*)):ti,ab,kw) OR ((collaborative NEAR/3 (review* OR overview*)):ti,ab,kw) OR ((pool* NEAR/3 analy*):ti,ab,kw) OR 'data syntheses*':ti,ab,kw OR 'data extraction*':ti,ab,kw OR 'data abstraction*':ti,ab,kw OR handsearch*':ti,ab,kw OR 'hand search*':ti,ab,kw OR 'mantel haenszel':ti,ab,kw OR peto:ti,ab,kw OR 'der simonian':ti,ab,kw OR dersimonian:ti,ab,kw OR 'fixed effect*':ti,ab,kw OR 'latin square*':ti,ab,kw OR 'meta-analy*':ti,ab,kw OR metaanaly*':ti,ab,kw OR 'systematic review*':ti,ab,kw OR 'meta regression*':ti,ab,kw OR metaregression*':ti,ab,kw OR ((comparative NEAR/3 (efficacy OR effectiveness)):ti,ab,kw) OR 'outcomes research':ti,ab,kw OR 'relative effectiveness':ti,ab,kw OR (((indirect OR 'indirect treatment' OR 'mixed-treatment' OR bayesian) NEAR/3 comparison*):ti,ab,kw) OR ((multi* NEAR/3 treatment NEAR/3 comparison*):ti,ab,kw) OR 'umbrella review*':ti,ab,kw OR ((multi* NEAR/2 paramet* NEAR/2 evidence NEAR/2 synthesis):ti,ab,kw) OR (((multi-paramet* OR multiparamet*) NEAR/2 evidence NEAR/2 synthesis):ti,ab,kw)	897158
#10	#3 AND #9	7979
#9	#4 OR #5 OR #6 OR #7 OR #8	73083
#8	'deep tms*':ti,ab,kw OR magpro*':ti,ab,kw OR magstim*':ti,ab,kw	584
#7	coil*':ti,ab,kw AND ('double cone*':ti,ab,kw OR figure:ti,ab,kw OR butterfly:ti,ab,kw OR h:ti,ab,kw)	8986
#6	theta*':ti,ab,kw AND stimul*':ti,ab,kw OR tbs:ti,ab,kw OR ctbs:ti,ab,kw OR itbs:ti,ab,kw OR bltbs:ti,ab,kw	15665
#5	((transcranial* OR 'trans-cranial*') NEAR/3 magnetic*):ti,ab,kw) OR tms:ti,ab,kw OR rtms:ti,ab,kw OR atms:ti,ab,kw OR ptms:ti,ab,kw OR stms:ti,ab,kw OR dtms:ti,ab,kw	46315
#4	'transcranial magnetic stimulation'/exp	32652
#3	#1 OR #2	724729

#2	depressi*:ti,ab,kw OR trd:ti,ab,kw OR mdd:ti,ab,kw OR dysthymi*:ti,ab,kw OR melancholia*:ti,ab,kw OR 'involuntional psychos*':ti,ab,kw OR unipolar*:ti,ab,kw	709668
#1	'major depression'/exp	85548

Cochrane

ID	Search	Hits
#1	MeSH descriptor: [Depressive Disorder] explode all trees	15396
#2	MeSH descriptor: [Depression] explode all trees	18859
#3	(depressi* OR TRD OR MDD OR dysthymi* OR melancholia* OR (involuntional NEXT psychos*) OR unipolar*):ti,ab,kw	108340
#4	{OR #1-#3}	108414
#5	MeSH descriptor: [Transcranial Magnetic Stimulation] explode all trees	2382
#6	((transcranial* OR trans cranial) NEAR/3 magnetic) OR TMS OR rTMS OR aTMS OR pTMS OR sTMS OR dTMS):ti,ab,kw	8735
#7	((theta* AND stimul*) OR TBS OR cTBS OR iTBS OR bTBS):ti,ab,kw	2535
#8	(coil* AND ((double NEXT cone*) OR figure OR butterfly OR H)):ti,ab,kw	467
#9	((deep NEXT TMS*) OR magpro* OR magstim*):ti,ab,kw	272
#10	{OR #5-#9}	10216
#11	#4 AND #10	2560
#12	#4 AND #10 with Cochrane Library publication date Between Jan 2021 and Dec 2024, in Cochrane Reviews	0

2.2 Søgehistorik klinisk effekt og sikkerhed – primær litteratur

Databaser og resultater

Tabel 2 - Resultater af søgning efter primær litteratur til belysning af Klinisk Effekt og Sikkerhed.

Database	Platform	Resultat RCT	Dato
PubMed	PubMed.gov	666	16.04.2024
Embase	Embase.com	475	16.04.2024
Cochrane Library	Wiley	893	16.04.2024
I alt		2034	
÷ dubletter vha. EndNote		1343	

PubMed

Search	Query	Results
#6	Search: ((((((("Depression"[Mesh]) OR ("Depressive Disorder"[Mesh])) OR (depressi*[Title/Abstract] OR TRD[Title/Abstract] OR MDD[Title/Abstract] OR dysthymi*[Title/Abstract] OR melancholia*[Title/Abstract] OR involuntional psychos*[Title/Abstract] OR unipolar*[Title/Abstract])) AND ("Transcranial Magnetic Stimulation"[Mesh] OR (((transcranial*[Title/Abstract] OR trans-cranial*[Title/Abstract]) AND magnetic*[Title/Abstract]) OR TMS[Title/Abstract] OR rTMS[Title/Abstract] OR aTMS[Title/Abstract] OR pTMS[Title/Abstract] OR sTMS[Title/Abstract] OR dTMS[Title/Abstract]) OR ((theta*[Title/Abstract] AND stimul*[Title/Abstract]) OR TBS[Title/Abstract] OR cTBS[Title/Abstract] OR iTBS[Title/Abstract] OR bTBS[Title/Abstract]) OR (coil*[Title/Abstract] AND (double cone*[Title/Abstract] OR figure[Title/Abstract] OR butterfly[Title/Abstract] OR H[Title/Abstract])) OR (Deep TMS*[Title/Abstract] OR Magpro*[Title/Abstract] OR Magstim*[Title/Abstract]))) AND ("Randomized Controlled Trial"[pt] OR "Controlled Clinical Trial"[pt] OR "Pragmatic Clinical Trial"[pt] OR "Equivalence Trial"[pt] OR "Clinical Trial, Phase III"[pt] OR "Randomized Controlled Trials as Topic"[mh] OR "Controlled Clinical Trials as Topic"[mh] OR "Random Allocation"[mh] OR "Double-Blind Method"[mh] OR "Single-Blind Method"[mh] OR Placebos[Mesh:NoExp] OR "Control Groups"[mh] OR (random*[tiab] OR sham[tiab] OR placebo*[tiab]) OR ((singl*[tiab] OR doubl*[tiab]) AND (blind*[tiab] OR dumm*[tiab] OR mask*[tiab])) OR ((tripl*[tiab] OR trebl*[tiab]) AND (blind*[tiab] OR dumm*[tiab] OR mask*[tiab])) OR (control*[tiab] AND (study[tiab] OR studies[tiab] OR trial*[tiab] OR group*[tiab])) OR (Nonrandom*[tiab] OR "non random*" [tiab] OR "non-random*" [tiab] OR "quasi-random*" [tiab] OR quasirandom*[tiab]) OR allocated[tiab] OR (("open label"[tiab] OR "open-label"[tiab]) AND (study[tiab] OR studies[tiab] OR trial*[tiab])) OR ((equivalence[tiab] OR superiority[tiab] OR "non-inferiority"[tiab] OR noninferiority[tiab]) AND (study[tiab] OR studies[tiab] OR trial*[tiab])) OR ("pragmatic study"[tiab] OR "pragmatic studies"[tiab]) OR ((pragmatic[tiab] OR practical[tiab]) AND trial*[tiab]) OR ((quasiexperimental[tiab] OR "quasi-experimental"[tiab]) AND (study[tiab] OR studies[tiab] OR trial*[tiab])) OR (phase[ti] AND (III[ti] OR 3[ti]) AND (study[ti] OR studies[ti] OR trial*[ti])) OR (phase[ot] AND (III[ot] OR 3[ot]) AND (study[ot] OR studies[ot] OR trial*[ot]))) AND (("2021"[Date - Publication] : "2024"[Date - Publication])) AND	666

(Danish[Language] OR English[Language] OR Norwegian[Language] OR Swedish[Language]) Sort by: Publication Date

#5 Search: (((("Depression"[Mesh]) OR ("Depressive Disorder"[Mesh])) OR (depressi*[Title/Abstract] OR TRD[Title/Abstract] OR MDD[Title/Abstract] OR dysthymi*[Title/Abstract] OR melancholia*[Title/Abstract] OR involuntal psychos*[Title/Abstract] OR unipolar*[Title/Abstract])) AND ("Transcranial Magnetic Stimulation"[Mesh] OR (((transcranial*[Title/Abstract] OR trans-cranial*[Title/Abstract]) AND magnetic*[Title/Abstract]) OR TMS[Title/Abstract] OR rTMS[Title/Abstract] OR aTMS[Title/Abstract] OR pTMS[Title/Abstract] OR sTMS[Title/Abstract] OR dTMS[Title/Abstract]) OR ((theta*[Title/Abstract] AND stimul*[Title/Abstract]) OR TBS[Title/Abstract] OR cTBS[Title/Abstract] OR iTBS[Title/Abstract] OR bITBS[Title/Abstract]) OR (coil*[Title/Abstract] AND (double cone*[Title/Abstract] OR figure[Title/Abstract] OR butterfly[Title/Abstract] OR H[Title/Abstract])) OR (Deep TMS*[Title/Abstract] OR Magpro*[Title/Abstract] OR Magstim*[Title/Abstract]))) AND ("Randomized Controlled Trial"[pt] OR "Controlled Clinical Trial"[pt] OR "Pragmatic Clinical Trial"[pt] OR "Equivalence Trial"[pt] OR "Clinical Trial, Phase III"[pt] OR "Randomized Controlled Trials as Topic"[mh] OR "Controlled Clinical Trials as Topic"[mh] OR "Random Allocation"[mh] OR "Double-Blind Method"[mh] OR "Single-Blind Method"[mh] OR Placebos[Mesh:NoExp] OR "Control Groups"[mh] OR (random*[tiab] OR sham[tiab] OR placebo*[tiab]) OR ((singl*[tiab] OR doubl*[tiab]) AND (blind*[tiab] OR dumm*[tiab] OR mask*[tiab])) OR ((tripl*[tiab] OR trebl*[tiab]) AND (blind*[tiab] OR dumm*[tiab] OR mask*[tiab])) OR (control*[tiab] AND (study[tiab] OR studies[tiab] OR trial*[tiab] OR group*[tiab])) OR (Nonrandom*[tiab] OR "non random*" [tiab] OR "non-random*" [tiab] OR "quasi-random*" [tiab] OR quasirandom*[tiab]) OR allocated[tiab] OR ("open label"[tiab] OR "open-label"[tiab]) AND (study[tiab] OR studies[tiab] OR trial*[tiab])) OR ((equivalence[tiab] OR superiority[tiab] OR "non-inferiority"[tiab] OR noninferiority[tiab]) AND (study[tiab] OR studies[tiab] OR trial*[tiab])) OR ("pragmatic study"[tiab] OR "pragmatic studies"[tiab]) OR ((pragmatic[tiab] OR practical[tiab]) AND trial*[tiab]) OR ((quasiexperimental[tiab] OR "quasi-experimental"[tiab]) AND (study[tiab] OR studies[tiab] OR trial*[tiab])) OR (phase[ti] AND (III[ti] OR 3[ti]) AND (study[ti] OR studies[ti] OR trial*[ti])) OR (phase[ot] AND (III[ot] OR 3[ot]) AND (study[ot] OR studies[ot] OR trial*[ot])))) Sort by: Publication Date

2,046

#4 Search: "Randomized Controlled Trial"[pt] OR "Controlled Clinical Trial"[pt] OR "Pragmatic Clinical Trial"[pt] OR "Equivalence Trial"[pt] OR "Clinical Trial, Phase III"[pt] OR "Randomized Controlled Trials as Topic"[mh] OR "Controlled Clinical Trials as Topic"[mh] OR "Random Allocation"[mh] OR "Double-Blind Method"[mh] OR "Single-Blind Method"[mh] OR Placebos[Mesh:NoExp] OR "Control Groups"[mh] OR (random*[tiab] OR sham[tiab] OR placebo*[tiab]) OR ((singl*[tiab] OR doubl*[tiab]) AND (blind*[tiab] OR dumm*[tiab] OR mask*[tiab])) OR ((tripl*[tiab] OR trebl*[tiab]) AND (blind*[tiab] OR dumm*[tiab] OR mask*[tiab])) OR (control*[tiab] AND (study[tiab] OR studies[tiab] OR trial*[tiab] OR group*[tiab])) OR (Nonrandom*[tiab] OR "non random*" [tiab] OR "non-random*" [tiab] OR "quasi-random*" [tiab] OR quasirandom*[tiab]) OR allocated[tiab] OR ("open label"[tiab] OR "open-label"[tiab]) AND (study[tiab] OR studies[tiab] OR trial*[tiab])) OR ((equivalence[tiab] OR superiority[tiab] OR "non-inferiority"[tiab] OR noninferiority[tiab]) AND (study[tiab] OR studies[tiab] OR trial*[tiab])) OR ("pragmatic study"[tiab] OR "pragmatic studies"[tiab]) OR ((pragmatic[tiab] OR practical[tiab]) AND trial*[tiab]) OR ((quasiexperimental[tiab] OR "quasi-experimental"[tiab]) AND (study[tiab] OR studies[tiab] OR trial*[tiab])) OR (phase[ti] AND (III[ti] OR 3[ti]) AND (study[ti] OR studies[ti] OR trial*[ti])) OR (phase[ot] AND (III[ot] OR 3[ot]) AND (study[ot] OR studies[ot] OR trial*[ot])) Sort by: Publication Date

4,541,882

#3 Search: (((("Depression"[Mesh]) OR ("Depressive Disorder"[Mesh])) OR (depressi*[Title/Abstract] OR TRD[Title/Abstract] OR MDD[Title/Abstract] OR dysthymi*[Title/Abstract] OR melancholia*[Title/Abstract] OR involuntal psychos*[Title/Abstract] OR unipolar*[Title/Abstract])) AND ("Transcranial Magnetic Stimulation"[Mesh] OR (((transcranial*[Title/Abstract] OR trans-cranial*[Title/Abstract]) AND magnetic*[Title/Abstract]) OR TMS[Title/Abstract] OR

4,487

rTMS[Title/Abstract] OR aTMS[Title/Abstract] OR pTMS[Title/Abstract] OR sTMS[Title/Abstract] OR dTMS[Title/Abstract] OR ((theta*[Title/Abstract] AND stimul*[Title/Abstract]) OR TBS[Title/Abstract] OR cTBS[Title/Abstract] OR iTBS[Title/Abstract] OR bITBS[Title/Abstract] OR (coil*[Title/Abstract] AND (double cone*[Title/Abstract] OR figure[Title/Abstract] OR butterfly[Title/Abstract] OR H[Title/Abstract])) OR (Deep TMS*[Title/Abstract] OR Magpro*[Title/Abstract] OR Magstim*[Title/Abstract])) Sort by: Publication Date

#2 Search: "Transcranial Magnetic Stimulation"[Mesh] OR (((transcranial*[Title/Abstract] OR trans-cranial*[Title/Abstract]) AND magnetic*[Title/Abstract]) OR TMS[Title/Abstract] OR rTMS[Title/Abstract] OR aTMS[Title/Abstract] OR pTMS[Title/Abstract] OR sTMS[Title/Abstract] OR dTMS[Title/Abstract] OR ((theta*[Title/Abstract] AND stimul*[Title/Abstract]) OR TBS[Title/Abstract] OR cTBS[Title/Abstract] OR iTBS[Title/Abstract] OR bITBS[Title/Abstract] OR (coil*[Title/Abstract] AND (double cone*[Title/Abstract] OR figure[Title/Abstract] OR butterfly[Title/Abstract] OR H[Title/Abstract])) OR (Deep TMS*[Title/Abstract] OR Magpro*[Title/Abstract] OR Magstim*[Title/Abstract])) Sort by: Publication Date 51,027

#1 Search: ("Depression"[Mesh]) OR ("Depressive Disorder"[Mesh])) OR (depressi*[Title/Abstract] OR TRD[Title/Abstract] OR MDD[Title/Abstract] OR dysthymi*[Title/Abstract] OR melancholia*[Title/Abstract] OR involuntional psychos*[Title/Abstract] OR unipolar*[Title/Abstract]) Sort by: Publication Date 570,231

Embase

No.	Query	Results
#25	#24 NOT ('chapter'/it OR 'conference abstract'/it OR 'conference paper'/it OR 'conference review'/it OR 'meta analysis'/de OR 'meta analysis topic'/de OR 'systematic review'/de OR 'systematic review topic'/de)	475
#24	#10 AND #22 AND ([danish]/lim OR [english]/lim OR [norwegian]/lim OR [swedish]/lim) AND [2021-2024]/py	936
#23	#10 AND #22	3233
#22	#11 OR #12 OR #13 OR #14 OR #15 OR #16 OR #17 OR #18 OR #19 OR #20 OR #21	3899972
#21	(phase NEAR/3 (iii OR 3) NEAR/3 (study OR studies OR trial*)):ti,ab,kw	116684
#20	((quasiexperimental OR 'quasi-experimental') NEAR/3 (study OR studies OR trial*)):ti,ab,kw	16622
#19	((pragmatic OR practical) NEAR/3 trial*):ti,ab,kw	8479
#18	'pragmatic study':ti,ab,kw OR 'pragmatic studies':ti,ab,kw	993
#17	((equivalence OR superiority OR 'non-inferiority' OR noninferiority) NEAR/3 (study OR studies OR trial*)):ti,ab,kw	18642
#16	('open label' NEAR/5 (study OR studies OR trial*)):ti,ab,kw	91127
#15	nonrandom*:ti,ab,kw OR 'non random*':ti,ab,kw OR 'non-random*':ti,ab,kw OR 'quasi-random*':ti,ab,kw OR quasirandom*:ti,ab,kw OR allocated:ti,ab,kw	186187

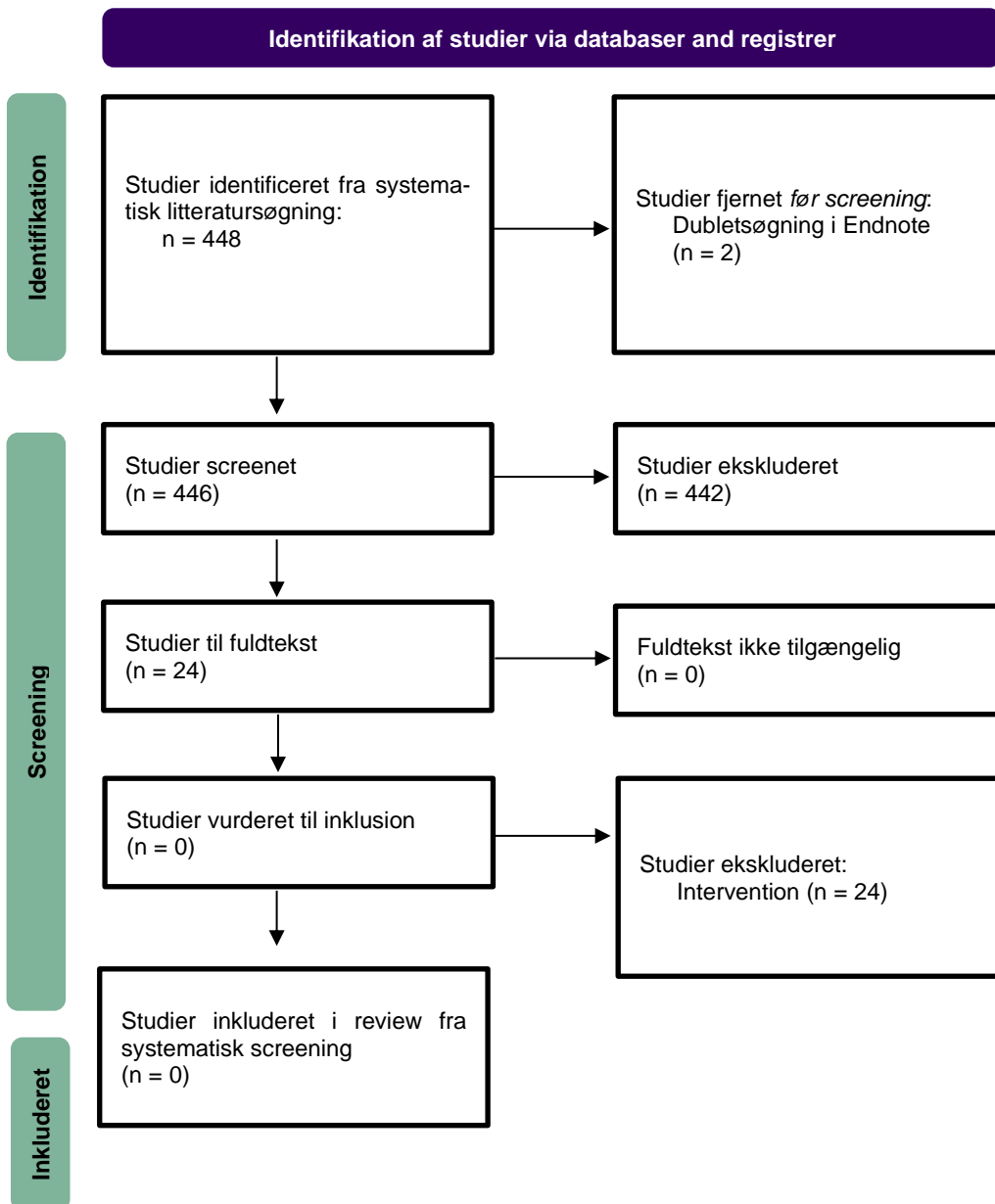
#14	(control* NEAR/3 (study OR studies OR trial* OR group*)):ti,ab,kw	1797312
#13	((singl* OR doubl* OR tripl* OR trebl*) NEAR/1 (blind* OR dumm* OR mask*)):ti,ab,kw	292087
#12	random*:ti,ab,kw OR sham:ti,ab,kw OR placebo*:ti,ab,kw	2282403
#11	'randomized controlled trial'/de OR 'randomized controlled trial (topic)/exp OR 'controlled clinical trial (topic)/exp OR 'controlled clinical trial'/de OR 'randomization'/de OR 'double blind procedure'/de OR 'single blind procedure'/de OR 'placebo'/de OR 'control group'/de	1700083
#10	#3 AND #9	8218
#9	#4 OR #5 OR #6 OR #7 OR #8	74522
#8	'deep tms*:ti,ab,kw OR magpro*:ti,ab,kw OR magstim*:ti,ab,kw	605
#7	coil*:ti,ab,kw AND ('double cone*:ti,ab,kw OR figure:ti,ab,kw OR butterfly:ti,ab,kw OR h:ti,ab,kw)	9092
#6	theta*:ti,ab,kw AND stimul*:ti,ab,kw OR tbs:ti,ab,kw OR ctbs:ti,ab,kw OR itbs:ti,ab,kw OR bltbs:ti,ab,kw	15988
#5	((transcranial* OR 'trans-cranial*') NEAR/3 magnetic*):ti,ab,kw OR tms:ti,ab,kw OR rtms:ti,ab,kw OR atms:ti,ab,kw OR ptms:ti,ab,kw OR stms:ti,ab,kw OR dtms:ti,ab,kw	47283
#4	'transcranial magnetic stimulation'/exp	33441
#3	#1 OR #2	736826
#2	depressi*:ti,ab,kw OR trd:ti,ab,kw OR mdd:ti,ab,kw OR dysthymi*:ti,ab,kw OR melancholia*:ti,ab,kw OR 'involuntal psychos*:ti,ab,kw OR unipolar*:ti,ab,kw	721495
#1	'major depression'/exp	87067

Cochrane

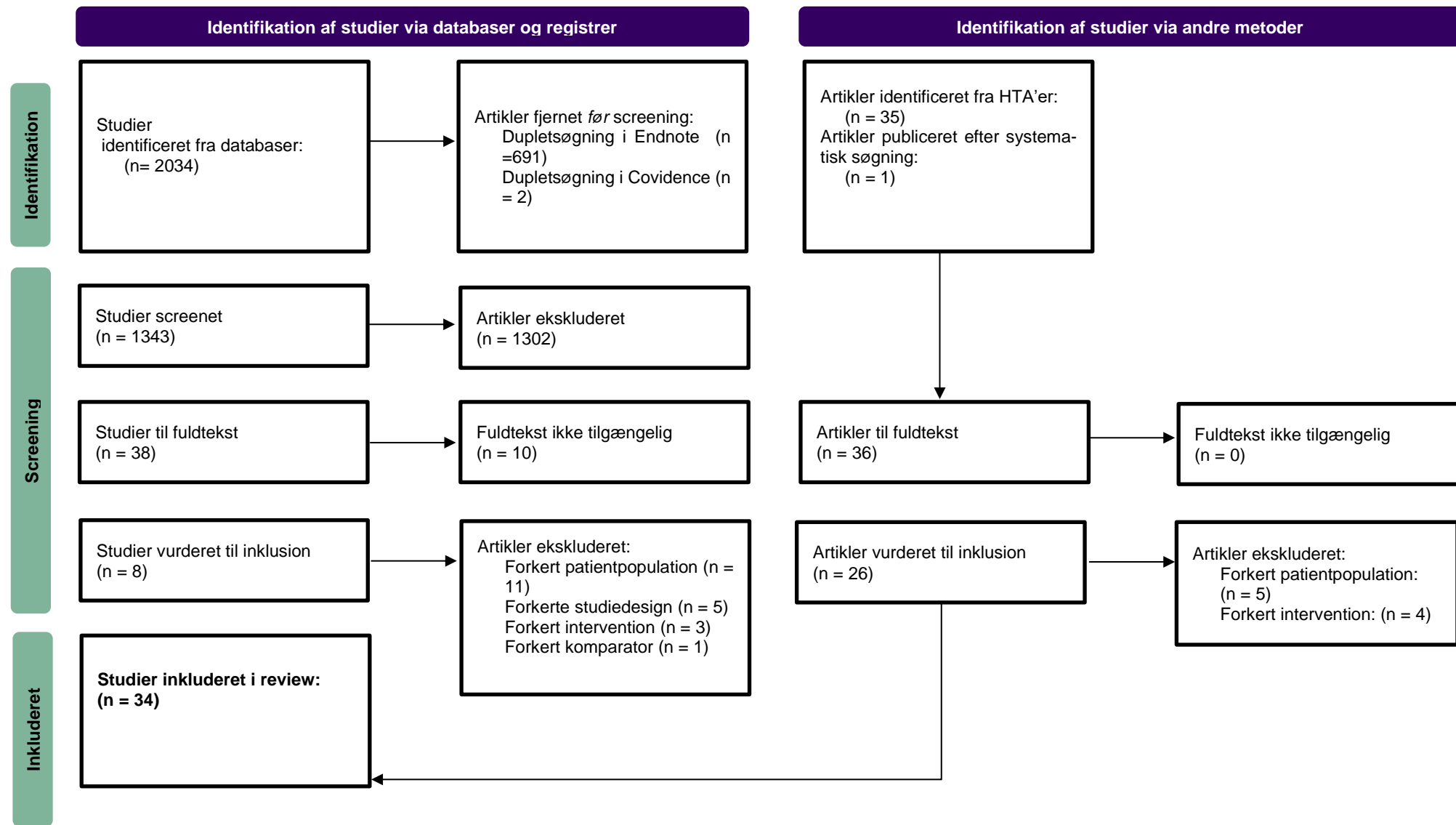
ID	Search	Hits
#1	MeSH descriptor: [Depressive Disorder] explode all trees	16528
#2	MeSH descriptor: [Depression] explode all trees	18110
#3	(depressi* OR TRD OR MDD OR dysthymi* OR melancholia* OR (involuntal NEXT psychos*) OR unipolar*):ti,ab,kw	111567
#4	{OR #1-#3}	111640
#5	MeSH descriptor: [Transcranial Magnetic Stimulation] explode all trees	2589
#6	((transcranial* OR trans cranial) NEAR/3 magnetic) OR TMS OR rTMS OR aTMS OR pTMS OR sTMS OR dTMS):ti,ab,kw	9071

#7	((theta* AND stimul*) OR TBS OR cTBS OR iTBS OR bITBS):ti,ab,kw	2677
#8	(coil* AND ((double NEXT cone*) OR figure OR butterfly OR H)):ti,ab,kw	486
#9	((deep NEXT TMS*) OR magpro* OR magstim*):ti,ab,kw	280
#10	{OR #5-#9}	10622
#11	#4 AND #10	2664
#12	#4 AND #10 with Publication Year from 2021 to 2024, in Trials	893

2.2.1 Prismadiagram – Klinisk effekt og sikkerhed, sekundærlitteratur



2.2.2 Prismadiagram - Primærlitteratur klinisk effekt og sikkerhed



2.3 Vurdering af evidens kvalitet - klinisk effekt og sikkerhed

Tabel 3 – Oversigt over *Cochranes Risk of Bias tool* (version 2) vurderinger.

Reference	Bias grundet randomisering	Bias grundet afvigelser fra interventioner	Bias grundet manglende data om effektmål	Bias i målingen af effektmål	Bias i af-rapporteringen	Samlet vurdering
Akpınar et al. (2022)	Nogle bekymringer	Lav	Lav	Lav	Lav	Nogle bekymringer
Anderson et al. (2007)	Lav	Lav	Lav	Lav	Lav	Lav
Avery et al. (2006)	Lav	Lav	Lav	Lav	Lav	Lav
Bakim et al. (2012)	Lav	Lav	Lav	Lav	Lav	Lav
Blumberger et al. (2012)	Lav	Høj	Nogle bekymringer	Lav	Lav	Høj
Blumberger et al. (2016)	Lav	Lav	Lav	Lav	Lav	Lav
Chail et al. (2022)	Nogle bekymringer	Lav	Lav	Lav	Lav	Nogle bekymringer
Cheng et al. (2022)	Lav	Lav	Lav	Lav	Lav	Lav

Dalhuisen et al. (2020)	Lav	Lav	Lav	Lav	Lav	Lav	Lav
Dalhuisen et al. (2024)	Lav	Lav	Lav	Lav	Lav	Lav	Lav
Dannon 2002	Nogle bekymringer	Lav	Lav	Lav	Lav	Lav	Nogle bekymringer
Eranti et al. (2007)	Lav	Lav	Lav	Lav	Lav	Lav	Lav
Fitzgerald et al. (2012)	Nogle bekymringer	Lav	Nogle bekymringer	Lav	Lav	Lav	Nogle bekymringer
Grunhaus et al. (2010)	Nogle bekymringer	Nogle bekymringer	Nogle bekymringer	Nogle bekymringer	Lav	Lav	Nogle bekymringer
Grunhaus et al. (2003)	Nogle bekymringer	Nogle bekymringer	Lav	Lav	Lav	Lav	Nogle bekymringer
Januel et al. (2006)	Nogle bekymringer	Lav	Lav	Lav	Lav	Lav	Nogle bekymringer
Kang et al. (2016)	Nogle bekymringer	Lav	Lav	Lav	Lav	Lav	Nogle bekymringer
Mantovani et al. (2013)	Nogle bekymringer	Lav	Lav	Lav	Lav	Lav	Nogle bekymringer

Mogg et al. (2008)	Lav	Lav	Lav	Lav	Lav	Lav	Lav
Padberg et al. (2002)	Nogle bekymringer	Lav	Lav	Lav	Lav	Lav	Nogle bekymringer
Pallanti et al. (2010)	Lav	Lav	Lav	Lav	Lav	Lav	Lav
Pan et al. (2023)	Lav	Lav	Lav	Lav	Lav	Lav	Lav
Papa-kostas et al. (2024)	Lav	Nogle bekymringer	Lav	Lav	Lav	Lav	Nogle bekymringer
Peng et al. (2012)	Nogle bekymringer	Lav	Lav	Lav	Lav	Lav	Nogle bekymringer
Pridmore et al. (2000)	Nogle bekymringer	Lav	Lav	Lav	Lav	Lav	Nogle bekymringer
Rosa et al. (2006)	Nogle bekymringer	Lav	Lav	Lav	Lav	Nogle bekymringer	Nogle bekymringer
Stern et al. (2007)	Nogle bekymringer	Lav	Lav	Lav	Lav	Lav	Nogle bekymringer
Theleritis et al. (2017)	Lav	Lav	Lav	Lav	Lav	Lav	Lav
Valkonen-Korhonen	Lav	Lav	Lav	Lav	Lav	Lav	Lav

et al. (2017)						
Voineskos et al. (2021)	Lav	Lav	Lav	Lav	Lav	Lav
Yildiz et al. (2023)	Lav	Lav	Lav	Lav	Lav	Lav
Yin et al. (2023)	Lav	Nogle bekym- ringer	Lav	Lav	Lav	Nogle be- kymringer
Zheng et al. (2015)	Lav	Lav	Lav	Lav	Lav	Lav

3

Bilag til patientperspektivet

3.1 Litteraturgennemgang for Patientperspektivet

3.1.1 Søgehistorik for Patientperspektivet

Tabel 4: Resultater af søgning efter primær litteratur til belysning af patientperspektivet.

Database	Platform	Resultat	Dato
PubMed	PubMed.gov	61	16.01.2024
Embase	Embase.com	108	17.01.2024
CINAHL with Full Text	EBSCOhost	71	17.01.2024
PsycINFO	APA	37	18.01.2024
I alt		277	
÷ dubletter vha. EndNote		197	

PubMed

Search	Query	Results
#14	Search: ((((((("Depression"[Mesh]) OR ("Depressive Disorder"[Mesh])) OR (depressi*[Title/Abstract] OR TRD[Title/Abstract] OR MDD[Title/Abstract] OR dysthymi*[Title/Abstract] OR melancholia*[Title/Abstract] OR involuntal psychos*[Title/Abstract] OR unipolar*[Title/Abstract])) AND (((("Transcranial Magnetic Stimulation"[Mesh]) OR ((transcranial*[Title/Abstract] OR trans-cranial*[Title/Abstract]) AND magnetic*[Title/Abstract]) OR TMS[Title/Abstract] OR rTMS[Title/Abstract] OR aTMS[Title/Abstract] OR pTMS[Title/Abstract] OR sTMS[Title/Abstract] OR dTMS[Title/Abstract])) OR ((theta*[Title/Abstract] AND stimul*[Title/Abstract]) OR TBS[Title/Abstract] OR cTBS[Title/Abstract] OR iTBS[Title/Abstract] OR blTBS[Title/Abstract])) OR (coil*[Title/Abstract] AND (double cone*[Title/Abstract] OR figure[Title/Abstract] OR butterfly[Title/Abstract] OR H[Title/Abstract]))) OR (Deep TMS*[Title/Abstract] OR Magpro*[Title/Abstract] OR Magstim*[Title/Abstract])) AND ("Patient Acceptance of Health Care"[MeSH Major Topic] OR "Health Knowledge, Attitudes, Practice"[Mesh Major Topic] OR "Patient Participation"[MeSH Major Topic] OR "Patient Preference"[MeSH Major Topic] OR "Patient Satisfaction"[MeSH Major Topic] OR "Adaptation, Psychological"[MeSH Major Topic] OR "Quality of Life"[MeSH Major Topic] OR "Health Education"[MeSH Major Topic] OR "Qualitative Research"[MeSH Major Topic] OR "Interviews as Topic"[MeSH Major Topic] OR "Focus Groups"[MeSH Major Topic] OR (("patient"[Title] OR "patients"[Title] OR "user"[Title]) AND ("preference*" [Title] OR "preferred"[Title] OR "input"[Title] OR "experienc*" [Title] OR "value*" [Title] OR "perspective*" [Title] OR "perception*" [Title] OR "perceiv*" [Title] OR "expect*" [Title] OR "choice*" [Title] OR "choose*" [Title] OR "choosing"[Title] OR "participat*" [Title] OR "accept*" [Title] OR "adheren*" [Title] OR "adhere"[Title] OR "nonadheren*" [Title] OR "complan*" [Title] OR "noncomplan*" [Title] OR	61

"willing**[Title] OR "convenience"[Title] OR "convenient"[Title] OR "challenge**[Title] OR "concern**[Title] OR "limitation**[Title] OR "quality of life"[Title] OR "life quality"[Title] OR "satisfact**[Title] OR "satisfied"[Title] OR "dissatisfact**[Title] OR "dissatisfied"[Title] OR "burden"[Title] OR "attitude**[Title] OR "knowledge"[Title] OR "belie**[Title] OR "opinion**[Title] OR "understanding"[Title] OR "reacti**[Title] OR "motivati**[Title] OR "motivated"[Title] OR "intention**[Title] OR "involv**[Title] OR "engag**[Title] OR "consult**[Title] OR "interact**[Title] OR "dialog**[Title] OR "conversation**[Title] OR "decision**[Title] OR "decide**[Title] OR "deciding"[Title] OR "empower**[Title] OR "barrier**[Title] OR "facilitator**[Title] OR "priorit**[Title])) OR (("patient"[Other Term] OR "patients"[Other Term] OR "user"[Other Term]) AND ("preference**[Other Term] OR "preferred"[Other Term] OR "input"[Other Term] OR "experienc**[Other Term] OR "value**[Other Term] OR "perspective**[Other Term] OR "perception**[Other Term] OR "perceiv**[Other Term] OR "expect**[Other Term] OR "choice**[Other Term] OR "choose**[Other Term] OR "choosing"[Other Term] OR "participat**[Other Term] OR "accept**[Other Term] OR "adheren**[Other Term] OR "adhere"[Other Term] OR "nonadheren**[Other Term] OR "complan**[Other Term] OR "noncomplan**[Other Term] OR "willing**[Other Term] OR "convenience"[Other Term] OR "convenient"[Other Term] OR "challenge**[Other Term] OR "concern**[Other Term] OR "limitation**[Other Term] OR "quality of life"[Other Term] OR "life quality"[Other Term] OR "satisfact**[Other Term] OR "satisfied"[Other Term] OR "dissatisfact**[Other Term] OR "dissatisfied"[Other Term] OR "burden"[Other Term] OR "attitude**[Other Term] OR "knowledge"[Other Term] OR "belie**[Other Term] OR "opinion**[Other Term] OR "understanding"[Other Term] OR "reacti**[Other Term] OR "motivati**[Other Term] OR "motivated"[Other Term] OR "intention**[Other Term] OR "involv**[Other Term] OR "engag**[Other Term] OR "consult**[Other Term] OR "interact**[Other Term] OR "dialog**[Other Term] OR "conversation**[Other Term] OR "decision**[Other Term] OR "decide**[Other Term] OR "deciding"[Other Term] OR "empower**[Other Term] OR "barrier**[Other Term] OR "facilitator**[Other Term] OR "priorit**[Other Term])) OR "patient reported"[Title] OR "patient centered**[Title] OR "patient centred**"[Title] OR "patient focused"[Title] OR "treatment satisf**"[Title] OR "treatment refus**"[Title] OR "patient reported"[Other Term] OR "patient centered**[Other Term] OR "patient centred**"[Other Term] OR "patient focused"[Other Term] OR "treatment satisf**"[Other Term] OR "treatment refus**"[Other Term] OR "quality of Life"[Title] OR "quality of Life"[Other Term] OR "patient satisfaction"[Title/Abstract] OR "patient's satisfaction"[Title/Abstract] OR "patients satisfaction"[Title/Abstract] OR "patient preference**"[Title/Abstract] OR "patient's preference**"[Title/Abstract] OR "patients preference**"[Title/Abstract] OR "patient acceptance"[Title/Abstract] OR "patient's acceptance"[Title/Abstract] OR "patients acceptance"[Title/Abstract] OR "patient engagement"[Title/Abstract] OR "patient's engagement"[Title/Abstract] OR "patients engagement"[Title/Abstract] OR "patient perspective**"[Title/Abstract] OR "patient's perspective**"[Title/Abstract] OR "patients perspective**"[Title/Abstract] OR "patient desire**"[Title/Abstract] OR "patient's desire**"[Title/Abstract] OR "patients desire**"[Title/Abstract] OR "patient view**"[Title/Abstract] OR "patient's view**"[Title/Abstract] OR "patients view**"[Title/Abstract] OR "patient focus"[Title/Abstract] OR "patient's focus"[Title/Abstract] OR "patients focus"[Title/Abstract] OR "patient expression**"[Title/Abstract] OR "patient's expression**"[Title/Abstract] OR "patients expression**"[Title/Abstract] OR "patient experienc**"[Title/Abstract] OR "patient's experienc**"[Title/Abstract] OR "patients experienc**"[Title/Abstract] OR "patient attitude**"[Title/Abstract] OR "patient's attitude**"[Title/Abstract] OR "patients attitude**"[Title/Abstract] OR "patient involvement**"[Title/Abstract] OR "patient's involvement**"[Title/Abstract] OR "patients involvement**"[Title/Abstract] OR "patient decision**"[Title/Abstract] OR "patient's decision**"[Title/Abstract] OR "patients decision**"[Title/Abstract] OR "patient empowerment"[Title/Abstract] OR "patient participation"[Title/Abstract] OR "patient's participation"[Title/Abstract] OR "patients participation"[Title/Abstract] OR "patient collaboration"[Title/Abstract] OR "patient's collaboration"[Title/Abstract] OR "patients collaboration"[Title/Abstract] OR "expert patient**"[Title/Abstract] OR "patient needs"[Title/Abstract] OR "patient's needs"[Title/Abstract] OR "patients needs"[Title/Abstract] OR "patient input"[Title/Abstract] OR "patient compliance"[Title/Abstract] OR

"patient's compliance"[Title/Abstract] OR "patients compliance"[Title/Abstract] OR "patient adherence"[Title/Abstract] OR "patient's adherence"[Title/Abstract] OR "patients adherence"[Title/Abstract] OR "user participation"[Title/Abstract] OR "user perspective*"[Title/Abstract] OR "users perspective*"[Title/Abstract] OR "user's perspective"[Title/Abstract] OR "user involvement"[Title/Abstract] OR "user preference*"[Title/Abstract] OR "user's preference*"[Title/Abstract] OR "users preference*"[Title/Abstract] OR "user experience*"[Title/Abstract] OR "user's experience*"[Title/Abstract] OR "users experience*"[Title/Abstract] OR "user perspective*" OR "user's perspective*"[Title/Abstract] OR "users perspective*" OR "partner"[Title] OR "partners"[Title] OR "couple*"[Title] OR "family"[Title] OR "families"[Title] OR "spouse*"[Title])) AND (("2019"[Date - Publication] : "2024"[Date - Publication])) AND (Danish[Language] OR English[Language] OR Norwegian[Language] OR Swedish[Language]) Sort by: Publication Date

#13 Search: (((("Depression"[Mesh]) OR ("Depressive Disorder"[Mesh])) OR (depressi*[Title/Abstract] OR TRD[Title/Abstract] OR MDD[Title/Abstract] OR dysthymi*[Title/Abstract] OR melancholia*[Title/Abstract] OR involuntal psychos*[Title/Abstract] OR unipolar*[Title/Abstract])) AND (((("Transcranial Magnetic Stimulation"[Mesh]) OR ((transcranial*[Title/Abstract] OR trans-cranial*[Title/Abstract]) AND magnetic*[Title/Abstract]) OR TMS[Title/Abstract] OR rTMS[Title/Abstract] OR aTMS[Title/Abstract] OR pTMS[Title/Abstract] OR sTMS[Title/Abstract] OR dTMS[Title/Abstract])) OR ((theta*[Title/Abstract] AND stimu*[Title/Abstract]) OR TBS[Title/Abstract] OR cTBS[Title/Abstract] OR iTBS[Title/Abstract] OR bTBS[Title/Abstract])) OR (coil*[Title/Abstract] AND (double cone*[Title/Abstract] OR figure[Title/Abstract] OR butterfly[Title/Abstract] OR H[Title/Abstract]))) OR (Deep TMS*[Title/Abstract] OR Magpro*[Title/Abstract] OR Magstim*[Title/Abstract])) AND ("Patient Acceptance of Health Care"[MeSH Major Topic] OR "Health Knowledge, Attitudes, Practice"[Mesh Major Topic] OR "Patient Participation"[MeSH Major Topic] OR "Patient Preference"[MeSH Major Topic] OR "Patient Satisfaction"[MeSH Major Topic] OR "Adaptation, Psychological"[MeSH Major Topic] OR "Quality of Life"[MeSH Major Topic] OR "Health Education"[MeSH Major Topic] OR "Qualitative Research"[MeSH Major Topic] OR "Interviews as Topic"[MeSH Major Topic] OR "Focus Groups"[MeSH Major Topic] OR (("patient"[Title] OR "patients"[Title] OR "user"[Title]) AND ("preference*"[Title] OR "preferred"[Title] OR "input"[Title] OR "experienc*"[Title] OR "value*"[Title] OR "perspective*"[Title] OR "perception*"[Title] OR "perceiv*"[Title] OR "expect*"[Title] OR "choice*"[Title] OR "choose*"[Title] OR "choosing"[Title] OR "participat*"[Title] OR "accept*"[Title] OR "adheren*"[Title] OR "adhere"[Title] OR "nonadheren*"[Title] OR "complian*"[Title] OR "noncomplian*"[Title] OR "willing*"[Title] OR "convenience"[Title] OR "convenient"[Title] OR "challenge*"[Title] OR "concern*"[Title] OR "limitation*"[Title] OR "quality of life"[Title] OR "life quality"[Title] OR "satisfact*"[Title] OR "satisfied"[Title] OR "dissatisfact*"[Title] OR "dissatisfied"[Title] OR "burden"[Title] OR "attitude*"[Title] OR "knowledge"[Title] OR "belie*"[Title] OR "opinion*"[Title] OR "understanding"[Title] OR "reacti*"[Title] OR "motivati*"[Title] OR "motivated"[Title] OR "intention*"[Title] OR "involv*"[Title] OR "engag*"[Title] OR "consult*"[Title] OR "interact*"[Title] OR "dialog*"[Title] OR "conversation*"[Title] OR "decision*"[Title] OR "decide*"[Title] OR "deciding"[Title] OR "empower*"[Title] OR "barrier*"[Title] OR "facilitator*"[Title] OR "priorit*"[Title])) OR (("patient"[Other Term] OR "patients"[Other Term] OR "user"[Other Term]) AND ("preference*"[Other Term] OR "preferred"[Other Term] OR "input"[Other Term] OR "experienc*"[Other Term] OR "value*"[Other Term] OR "perspective*"[Other Term] OR "perception*"[Other Term] OR "perceiv*"[Other Term] OR "expect*"[Other Term] OR "choice*"[Other Term] OR "choose*"[Other Term] OR "choosing"[Other Term] OR "participat*"[Other Term] OR "accept*"[Other Term] OR "adheren*"[Other Term] OR "adhere"[Other Term] OR "nonadheren*"[Other Term] OR "complian*"[Other Term] OR "noncomplian*"[Other Term] OR "willing*"[Other Term] OR "convenience"[Other Term] OR "convenient"[Other Term] OR "challenge*"[Other Term] OR "concern*"[Other Term] OR "limitation*"[Other Term] OR "quality of life"[Other Term] OR "life quality"[Other Term] OR "satisfact*"[Other Term] OR "satisfied"[Other Term] OR "dissatisfact*"[Other Term] OR "dissatisfied"[Other Term] OR "burden"[Other Term] OR

122

"attitude**"[Other Term] OR "knowledge"[Other Term] OR "belie**"[Other Term] OR "opin-
 ion**"[Other Term] OR "understanding"[Other Term] OR "reacti**"[Other Term] OR "moti-
 vati**"[Other Term] OR "motivated"[Other Term] OR "intention**"[Other Term] OR "in-
 involv**"[Other Term] OR "engag**"[Other Term] OR "consult**"[Other Term] OR "inter-
 act**"[Other Term] OR "dialog**"[Other Term] OR "conversation**"[Other Term] OR "dec-
 sion**"[Other Term] OR "decide**"[Other Term] OR "deciding"[Other Term] OR "em-
 power**"[Other Term] OR "barrier**"[Other Term] OR "facilitator**"[Other Term] OR "pri-
 orit**"[Other Term])) OR "patient reported"[Title] OR "patient centered**"[Title] OR "patient
 centred**"[Title] OR "patient focused"[Title] OR "treatment satisf**"[Title] OR "treatment re-
 fus**"[Title] OR "patient reported"[Other Term] OR "patient centered**"[Other Term] OR "pa-
 tient centred**"[Other Term] OR "patient focused"[Other Term] OR "treatment satisf**"[Other
 Term] OR "treatment refus**"[Other Term] OR "quality of Life"[Title] OR "quality of Life"[Other
 Term] OR "patient satisfaction"[Title/Abstract] OR "patient's satisfaction"[Title/Abstract] OR
 "patients satisfaction"[Title/Abstract] OR "patient preference**"[Title/Abstract] OR "patient's
 preference**"[Title/Abstract] OR "patients preference**"[Title/Abstract] OR "patient ac-
 ceptance"[Title/Abstract] OR "patient's acceptance"[Title/Abstract] OR "patients ac-
 ceptance"[Title/Abstract] OR "patient engagement"[Title/Abstract] OR "patient's engage-
 ment"[Title/Abstract] OR "patients engagement"[Title/Abstract] OR "patient perspective**"[Ti-
 tle/Abstract] OR "patient's perspective**"[Title/Abstract] OR "patients perspective**"[Title/Ab-
 stract] OR "patient desire**"[Title/Abstract] OR "patient's desire**"[Title/Abstract] OR "patients
 desire**"[Title/Abstract] OR "patient view**"[Title/Abstract] OR "patient's view**"[Title/Abstract]
 OR "patients view**"[Title/Abstract] OR "patient focus"[Title/Abstract] OR "patient's focus"[Ti-
 tle/Abstract] OR "patients focus"[Title/Abstract] OR "patient expression**"[Title/Abstract] OR
 "patient's expression**"[Title/Abstract] OR "patients expression**"[Title/Abstract] OR "patient
 experienc**"[Title/Abstract] OR "patient's experienc**"[Title/Abstract] OR "patients experi-
 enc**"[Title/Abstract] OR "patient attitude**"[Title/Abstract] OR "patient's attitude**"[Title/Ab-
 stract] OR "patients attitude**"[Title/Abstract] OR "patient involvement**"[Title/Abstract] OR
 "patient's involvement**"[Title/Abstract] OR "patients involvement**"[Title/Abstract] OR "pa-
 tient decision**"[Title/Abstract] OR "patient's decision**"[Title/Abstract] OR "patients deci-
 sion"[Title/Abstract] OR "patient empowerment"[Title/Abstract] OR "patient participation"[Ti-
 tle/Abstract] OR "patient's participation"[Title/Abstract] OR "patients participation"[Title/Ab-
 stract] OR "patient collaboration"[Title/Abstract] OR "patient's collaboration"[Title/Abstract]
 OR "patients collaboration"[Title/Abstract] OR "expert patient**"[Title/Abstract] OR "patient
 needs**"[Title/Abstract] OR "patient's needs**"[Title/Abstract] OR "patients needs"[Title/Ab-
 stract] OR "patient input"[Title/Abstract] OR "patient compliance"[Title/Abstract] OR "pa-
 tient's compliance"[Title/Abstract] OR "patients compliance"[Title/Abstract] OR "patient ad-
 herence"[Title/Abstract] OR "patient's adherence"[Title/Abstract] OR "patients adher-
 ence"[Title/Abstract] OR "user participation"[Title/Abstract] OR "user perspective**"[Title/Ab-
 stract] OR "users perspective**"[Title/Abstract] OR "user's perspective"[Title/Abstract] OR
 "user involvement"[Title/Abstract] OR "user preference**"[Title/Abstract] OR "user's prefer-
 ence**"[Title/Abstract] OR "users preference**"[Title/Abstract] OR "user experience**"[Title/Ab-
 stract] OR "user's experience**"[Title/Abstract] OR "users experience**"[Title/Abstract] OR
 "user perspective**" OR "user's perspective**"[Title/Abstract] OR "users perspective**" OR
 "partner"[Title] OR "partners"[Title] OR "couple**"[Title] OR "family"[Title] OR "families"[Title]
 OR "spouse**"[Title]) Sort by: Publication Date

#12	Search: "Patient Acceptance of Health Care"[MeSH Major Topic] OR "Health Knowledge, Attitudes, Practice"[Mesh Major Topic] OR "Patient Participation"[MeSH Major Topic] OR "Patient Preference"[MeSH Major Topic] OR "Patient Satisfaction"[MeSH Major Topic] OR "Adaptation, Psychological"[MeSH Major Topic] OR "Quality of Life"[MeSH Major Topic] OR "Health Education"[MeSH Major Topic] OR "Qualitative Research"[MeSH Major Topic] OR "Interviews as Topic"[MeSH Major Topic] OR "Focus Groups"[MeSH Major Topic] OR (("pa- tient"[Title] OR "patients"[Title] OR "user"[Title]) AND ("preference**"[Title] OR "preferred"[Ti- tle] OR "input"[Title] OR "experienc**"[Title] OR "value**"[Title] OR "perspective**"[Title] OR "perception**"[Title] OR "perceiv**"[Title] OR "expect**"[Title] OR "choice**"[Title] OR	<u>1.233.149</u>
-----	--	------------------

"choose**"[Title] OR "choosing"[Title] OR "participat**"[Title] OR "accept**"[Title] OR "adheren**"[Title] OR "adhere"[Title] OR "nonadheren**"[Title] OR "complan**"[Title] OR "non-complian**"[Title] OR "willing**"[Title] OR "convenience"[Title] OR "convenient"[Title] OR "challenge**"[Title] OR "concern**"[Title] OR "limitation**"[Title] OR "quality of life"[Title] OR "life quality"[Title] OR "satisfact**"[Title] OR "satisfied"[Title] OR "dissatisfact**"[Title] OR "dissatisfied"[Title] OR "burden"[Title] OR "attitude**"[Title] OR "knowledge"[Title] OR "belie**"[Title] OR "opinion**"[Title] OR "understanding"[Title] OR "reacti**"[Title] OR "motivati**"[Title] OR "motivated"[Title] OR "intention**"[Title] OR "involv**"[Title] OR "engag**"[Title] OR "consult**"[Title] OR "interact**"[Title] OR "dialog**"[Title] OR "conversation**"[Title] OR "decision**"[Title] OR "decide**"[Title] OR "deciding"[Title] OR "empower**"[Title] OR "barrier**"[Title] OR "facilitator**"[Title] OR "priorit**"[Title])) OR (("patient"[Other Term] OR "patients"[Other Term] OR "user"[Other Term]) AND ("preference**"[Other Term] OR "preferred"[Other Term] OR "input"[Other Term] OR "experienc**"[Other Term] OR "value**"[Other Term] OR "perspective**"[Other Term] OR "perception**"[Other Term] OR "perceiv**"[Other Term] OR "expect**"[Other Term] OR "choice**"[Other Term] OR "choose**"[Other Term] OR "choosing"[Other Term] OR "participat**"[Other Term] OR "accept**"[Other Term] OR "adheren**"[Other Term] OR "adhere"[Other Term] OR "nonadheren**"[Other Term] OR "complan**"[Other Term] OR "noncomplian**"[Other Term] OR "willing**"[Other Term] OR "convenience"[Other Term] OR "convenient"[Other Term] OR "challenge**"[Other Term] OR "concern**"[Other Term] OR "limitation**"[Other Term] OR "quality of life"[Other Term] OR "life quality"[Other Term] OR "satisfact**"[Other Term] OR "satisfied"[Other Term] OR "dissatisfact**"[Other Term] OR "dissatisfied"[Other Term] OR "burden"[Other Term] OR "attitude**"[Other Term] OR "knowledge"[Other Term] OR "belie**"[Other Term] OR "opinion**"[Other Term] OR "understanding"[Other Term] OR "reacti**"[Other Term] OR "motivati**"[Other Term] OR "motivated"[Other Term] OR "intention**"[Other Term] OR "involv**"[Other Term] OR "engag**"[Other Term] OR "consult**"[Other Term] OR "interact**"[Other Term] OR "dialog**"[Other Term] OR "conversation**"[Other Term] OR "decision**"[Other Term] OR "decide**"[Other Term] OR "deciding"[Other Term] OR "empower**"[Other Term] OR "barrier**"[Other Term] OR "facilitator**"[Other Term] OR "priorit**"[Other Term])) OR "patient reported"[Title] OR "patient centered**"[Title] OR "patient centred**"[Title] OR "patient focused"[Title] OR "treatment satisf**"[Title] OR "treatment refus**"[Title] OR "patient reported"[Other Term] OR "patient centered**"[Other Term] OR "patient centred**"[Other Term] OR "patient focused"[Other Term] OR "treatment satisf**"[Other Term] OR "treatment refus**"[Other Term] OR "quality of Life"[Title] OR "quality of Life"[Other Term] OR "patient satisfaction"[Title/Abstract] OR "patient's satisfaction"[Title/Abstract] OR "patients satisfaction"[Title/Abstract] OR "patient preference**"[Title/Abstract] OR "patient's preference**"[Title/Abstract] OR "patients preference**"[Title/Abstract] OR "patient acceptance"[Title/Abstract] OR "patient's acceptance"[Title/Abstract] OR "patients acceptance"[Title/Abstract] OR "patient engagement"[Title/Abstract] OR "patient's engagement"[Title/Abstract] OR "patients engagement"[Title/Abstract] OR "patient perspective**"[Title/Abstract] OR "patient's perspective**"[Title/Abstract] OR "patients perspective**"[Title/Abstract] OR "patient desire**"[Title/Abstract] OR "patient's desire**"[Title/Abstract] OR "patients desire**"[Title/Abstract] OR "patient view**"[Title/Abstract] OR "patient's view**"[Title/Abstract] OR "patients view**"[Title/Abstract] OR "patient focus"[Title/Abstract] OR "patient's focus"[Title/Abstract] OR "patients focus"[Title/Abstract] OR "patient expression**"[Title/Abstract] OR "patient's expression**"[Title/Abstract] OR "patients expression**"[Title/Abstract] OR "patient experienc**"[Title/Abstract] OR "patient's experienc**"[Title/Abstract] OR "patients experienc**"[Title/Abstract] OR "patient attitude**"[Title/Abstract] OR "patient's attitude**"[Title/Abstract] OR "patients attitude**"[Title/Abstract] OR "patient involvement**"[Title/Abstract] OR "patient's involvement**"[Title/Abstract] OR "patients involvement**"[Title/Abstract] OR "patient decision**"[Title/Abstract] OR "patient's decision**"[Title/Abstract] OR "patients decision**"[Title/Abstract] OR "patient empowerment"[Title/Abstract] OR "patient participation"[Title/Abstract] OR "patient's participation"[Title/Abstract] OR "patients participation"[Title/Abstract] OR "patient collaboration"[Title/Abstract] OR "patient's collaboration"[Title/Abstract] OR "patients collaboration"[Title/Abstract] OR "expert patient**"[Title/Abstract] OR "patient

	needs"[Title/Abstract] OR "patient's needs"[Title/Abstract] OR "patients needs"[Title/Abstract] OR "patient input"[Title/Abstract] OR "patient compliance"[Title/Abstract] OR "patient's compliance"[Title/Abstract] OR "patients compliance"[Title/Abstract] OR "patient adherence"[Title/Abstract] OR "patient's adherence"[Title/Abstract] OR "patients adherence"[Title/Abstract] OR "user participation"[Title/Abstract] OR "user perspective*"[Title/Abstract] OR "users perspective*"[Title/Abstract] OR "user's perspective"[Title/Abstract] OR "user involvement"[Title/Abstract] OR "user preference*"[Title/Abstract] OR "user's preference*"[Title/Abstract] OR "users preference*"[Title/Abstract] OR "user experience*"[Title/Abstract] OR "user's experience*"[Title/Abstract] OR "users experience*"[Title/Abstract] OR "user perspective*" OR "user's perspective*"[Title/Abstract] OR "users perspective*" OR "partner"[Title] OR "partners"[Title] OR "couple*"[Title] OR "family"[Title] OR "families"[Title] OR "spouse*"[Title] Sort by: Publication Date	
#11	Search: (((("Depression"[Mesh]) OR ("Depressive Disorder"[Mesh])) OR (depressi*[Title/Abstract] OR TRD[Title/Abstract] OR MDD[Title/Abstract] OR dysthymi*[Title/Abstract] OR melancholia*[Title/Abstract] OR involuntal psychos*[Title/Abstract] OR unipolar*[Title/Abstract])) AND (((("Transcranial Magnetic Stimulation"[Mesh]) OR ((transcranial*[Title/Abstract] OR trans-cranial*[Title/Abstract]) AND magnetic*[Title/Abstract]) OR TMS[Title/Abstract] OR rTMS[Title/Abstract] OR aTMS[Title/Abstract] OR pTMS[Title/Abstract] OR sTMS[Title/Abstract] OR dTMS[Title/Abstract])) OR ((theta*[Title/Abstract] AND stimul*[Title/Abstract]) OR TBS[Title/Abstract] OR cTBS[Title/Abstract] OR iTBS[Title/Abstract] OR bITBS[Title/Abstract])) OR (coil*[Title/Abstract] AND (double cone*[Title/Abstract] OR figure[Title/Abstract] OR butterfly[Title/Abstract] OR H[Title/Abstract]))) OR (Deep TMS*[Title/Abstract] OR Magpro*[Title/Abstract] OR Magstim*[Title/Abstract])) Sort by: Publication Date	<u>4,386</u>
#10	Search: (((("Transcranial Magnetic Stimulation"[Mesh]) OR ((transcranial*[Title/Abstract] OR trans-cranial*[Title/Abstract]) AND magnetic*[Title/Abstract]) OR TMS[Title/Abstract] OR rTMS[Title/Abstract] OR aTMS[Title/Abstract] OR pTMS[Title/Abstract] OR sTMS[Title/Abstract] OR dTMS[Title/Abstract])) OR ((theta*[Title/Abstract] AND stimul*[Title/Abstract]) OR TBS[Title/Abstract] OR cTBS[Title/Abstract] OR iTBS[Title/Abstract] OR bITBS[Title/Abstract])) OR (coil*[Title/Abstract] AND (double cone*[Title/Abstract] OR figure[Title/Abstract] OR butterfly[Title/Abstract] OR H[Title/Abstract]))) OR (Deep TMS*[Title/Abstract] OR Magpro*[Title/Abstract] OR Magstim*[Title/Abstract]) Sort by: Publication Date	<u>50,057</u>
#9	Search: Deep TMS*[Title/Abstract] OR Magpro*[Title/Abstract] OR Magstim*[Title/Abstract] Sort by: Publication Date	<u>215</u>
#8	Search: coil*[Title/Abstract] AND (double cone*[Title/Abstract] OR figure[Title/Abstract] OR butterfly[Title/Abstract] OR H[Title/Abstract]) Sort by: Publication Date	<u>4,415</u>
#7	Search: (theta*[Title/Abstract] AND stimul*[Title/Abstract]) OR TBS[Title/Abstract] OR cTBS[Title/Abstract] OR iTBS[Title/Abstract] OR bITBS[Title/Abstract] Sort by: Publication Date	<u>11,040</u>
#6	Search: ((transcranial*[Title/Abstract] OR trans-cranial*[Title/Abstract]) AND magnetic*[Title/Abstract] OR TMS[Title/Abstract] OR rTMS[Title/Abstract] OR aTMS[Title/Abstract] OR pTMS[Title/Abstract] OR sTMS[Title/Abstract] OR dTMS[Title/Abstract] Sort by: Publication Date	<u>35,192</u>
#5	Search: "Transcranial Magnetic Stimulation"[Mesh] Sort by: Publication Date	<u>15,321</u>
#4	Search: (("Depression"[Mesh]) OR ("Depressive Disorder"[Mesh])) OR (depressi*[Title/Abstract] OR TRD[Title/Abstract] OR MDD[Title/Abstract] OR dysthymi*[Title/Abstract] OR	<u>561,204</u>

	melancholia*[Title/Abstract] OR involuntal psychos*[Title/Abstract] OR unipolar*[Title/Abstract]) Sort by: Publication Date	
#3	Search: depressi*[Title/Abstract] OR TRD[Title/Abstract] OR MDD[Title/Abstract] OR dysthymi*[Title/Abstract] OR melancholia*[Title/Abstract] OR involuntal psychos*[Title/Abstract] OR unipolar*[Title/Abstract] Sort by: Publication Date	<u>514,900</u>
#2	Search: "Depressive Disorder"[Mesh] Sort by: Publication Date	<u>123,514</u>
#1	Search: "Depression"[Mesh] Sort by: Publication Date	<u>154,522</u>

Embase

No.	Query	Results
#13	#10 AND #11 AND ([danish]/lim OR [english]/lim OR [norwegian]/lim OR [swedish]/lim) AND [2019-2024]/py	108
#12	#10 AND #11	223
#11	'patient attitude'/exp/mj OR 'psychological adjustment'/exp/mj OR 'quality of life'/exp/mj OR 'health education'/exp/mj OR 'qualitative research'/exp/mj OR 'interview'/exp/mj OR (((patient OR patients OR user) NEAR/3 (preference* OR preferred OR input OR experienc* OR value* OR perspective* OR perception* OR perceiv* OR expect* OR choice* OR choose* OR choosing OR participat* OR accept* OR adheren* OR adhere OR nonadheren* OR complian* OR noncomplian* OR willing* OR convenience OR convenient OR challenge* OR concern* OR limitation* OR 'quality of life' OR 'life quality' OR satisfact* OR satisfied OR dissatisfact* OR dissatisfied OR burden OR attitude* OR knowledge OR belie* OR opinion* OR understanding OR reacti* OR motivati* OR motivated OR intention* OR involv* OR engag* OR consult* OR interact* OR dialog* OR conversation* OR decision* OR decide* OR deciding* OR empower* OR barrier* OR facilitator* OR priorit*)):ti) OR (((patient OR patients OR user) NEAR/3 (preference* OR preferred OR input OR experienc* OR value* OR perspective* OR perception* OR perceiv* OR expect* OR choice* OR choose* OR choosing OR participat* OR accept* OR adheren* OR adhere OR nonadheren* OR complian* OR noncomplian* OR willing* OR convenience OR convenient OR challenge* OR concern* OR limitation* OR 'quality of life' OR 'life quality' OR satisfact* OR satisfied OR dissatisfact* OR dissatisfied OR burden OR attitude* OR knowledge OR belie* OR opinion* OR understanding OR reacti* OR motivati* OR motivated OR intention* OR involv* OR engag* OR consult* OR interact* OR dialog* OR conversation* OR decision* OR decide* OR deciding* OR empower* OR barrier* OR facilitator* OR priorit*)):kw) OR 'patient reported':ti OR 'patient centered*':ti OR 'patient centred*':ti OR 'patient focused':ti OR 'treatment satisf*':ti OR 'treatment refus*':ti OR 'patient reported':kw OR 'patient centered*':kw OR 'patient centred*':kw OR 'patient focused':kw OR 'treatment satisf*':kw OR 'treatment refus*':kw OR 'quality of life':ti OR 'quality of life':kw OR (((patient* OR user*) NEAR/1 (satisfaction OR preference* OR acceptance OR engagement OR perspective* OR desire* OR view* OR focus OR expression* OR experienc* OR attitude* OR involvement* OR decision* OR empowerment OR participation OR collaboration OR expert OR needs OR input OR compliance OR adherence OR perspective* OR involvement OR preference* OR experienc*)):ab,ti) OR partner:ti OR partners:ti OR couple*:ti OR spouse*:ti OR family:ti OR families:ti	1256155
#10	#3 AND #9	7984

#9	#4 OR #5 OR #6 OR #7 OR #8	73134
#8	'deep tms*:ti,ab,kw OR magpro*:ti,ab,kw OR magstim*:ti,ab,kw	584
#7	coil*:ti,ab,kw AND ('double cone*':ti,ab,kw OR figure:ti,ab,kw OR butterfly:ti,ab,kw OR h:ti,ab,kw)	8995
#6	theta*:ti,ab,kw AND stimul*:ti,ab,kw OR tbs:ti,ab,kw OR ctbs:ti,ab,kw OR itbs:ti,ab,kw OR bltbs:ti,ab,kw	15677
#5	((transcranial* OR 'trans-cranial*') NEAR/3 magnetic*):ti,ab,kw) OR tms:ti,ab,kw OR rtms:ti,ab,kw OR atms:ti,ab,kw OR ptms:ti,ab,kw OR stms:ti,ab,kw OR dtms:ti,ab,kw	46347
#4	'transcranial magnetic stimulation'/exp	32673
#3	#1 OR #2	725097
#2	depressi*:ti,ab,kw OR trd:ti,ab,kw OR mdd:ti,ab,kw OR dysthymi*:ti,ab,kw OR melancholia*:ti,ab,kw OR 'involutional psychos*':ti,ab,kw OR unipolar*:ti,ab,kw	710028
#1	'major depression'/exp	85586

CINAHL

#	Query	Limiters/Expanders	Results
S14	S11 AND S12	Limiters - Publication Date: 20190101-20241231; Language: Danish, English, Norwegian, Swedish	71
S13	S11 AND S12		161
S12	((MH "Attitude to Health+") OR (MH "Consumer Participation") OR (MH "Adaptation, Psychological+") OR (MH "Psychological Well-Being") OR (MH "Quality of Life+") OR (MH "Health Education+") OR (MH "Qualitative Studies+") OR (MH "Interviews+") OR (MH "Focus Groups")) OR TI ((patient OR patients OR user) N3 (preference* OR preferred OR input OR experienc* OR value* OR perspective* OR perception* OR perceiv* OR expect* OR choice* OR choose* OR choosing OR participat* OR accept* OR adheren* OR adhere OR non-adheren* OR complian* OR noncomplian* OR willing* OR convenience OR convenient OR challenge* OR concern* OR limitation* OR quality of life OR life quality OR satisfact* OR satisfied OR dissatisfact* OR dissatisfied OR burden OR attitude* OR knowledge OR belie* OR opinion* OR understanding OR reacti* OR motivati* OR motivated OR intention* OR involv* OR engag* OR consult* OR interact* OR dialog* OR conversation* OR decision* OR decide* OR deciding* OR empower* OR barrier* OR facilitator* OR priorit*)) OR AB ((patient OR patients OR user) N3 (preference* OR preferred OR input OR experienc* OR value* OR perspective* OR perception* OR perceiv* OR expect* OR choice* OR choose* OR choosing OR participat* OR accept* OR adheren* OR adhere OR nonadheren* OR complian* OR noncomplian* OR willing* OR convenience OR convenient OR challenge* OR concern* OR limitation* OR quality of life OR life quality OR satisfact* OR satisfied OR dissatisfact* OR dissatisfied OR burden OR attitude* OR knowledge OR belie* OR opinion* OR understanding OR reacti* OR motivati* OR motivated OR intention* OR involv* OR engag* OR consult* OR interact* OR dialog* OR conversation* OR decision* OR decide* OR deciding* OR empower* OR barrier* OR facilitator* OR priorit*)) OR TI ((patient reported OR patient centered* OR patient	1,202,896	

	centred* OR patient focused OR treatment satisf* OR treatment refus*)) OR AB ((patient reported OR patient centered* OR patient centred* OR patient focused OR treatment satisf* OR treatment refus*)) OR TI ((quality of life OR life quality)) OR AB ((quality of life OR life quality)) OR TI ((patient* OR user*) N0 (satisfaction OR preference* OR acceptance OR engagement OR perspective* OR desire* OR view* OR focus OR expression* OR experienc* OR attitude* OR involvement* OR decision* OR empowerment OR participation OR collaboration OR expert OR needs OR input OR compliance OR adherence OR perspective* OR involvement OR preference* OR experienc*)) OR AB ((patient* OR user*) N0 (satisfaction OR preference* OR acceptance OR engagement OR perspective* OR desire* OR view* OR focus OR expression* OR experienc* OR attitude* OR involvement* OR decision* OR empowerment OR participation OR collaboration OR expert OR needs OR input OR compliance OR adherence OR perspective* OR involvement OR preference* OR experienc*))) OR TI (partner OR partners OR couple* OR spouse* OR family OR families)	
S11	S3 AND S10	1,068
S10	S4 OR S5 OR S6 OR S7 OR S8 OR S9	9,771
S9	deep tms* OR magpro* OR magstim*	35
S8	coil* AND (double cone* OR figure OR butterfly OR h)	819
S7	(theta* AND stimul*) OR tbs OR ctbs OR itbs OR bltbs	1,748
S6	tms OR rtms OR atms OR ptms OR stms OR dtms	5,585
S5	(transcranial* OR trans-cranial*) N3 magnetic*	4,160
S4	(MH "Transcranial Magnetic Stimulation")	1,932
S3	S1 OR S2	223,543
S2	depressi* OR TRD OR MDD OR dysthymi* OR melancholia* OR involuntional psychos* OR unipolar*	223,543
S1	(MH "Depression+")	137,717

PsycINFO

#	Query	Results
#5	(((IndexTermsFilt: ("Anaclitic Depression")) OR (IndexTermsFilt: ("Dythymic Disorder")) OR (IndexTermsFilt: ("Endogenous Depression")) OR (IndexTermsFilt: ("Late Life Depression")) OR (IndexTermsFilt: ("Postpartum Depression")) OR (IndexTermsFilt: ("Reactive Depression")) OR (IndexTermsFilt: ("Recurrent Depression")) OR (IndexTermsFilt: ("Treatment Resistant Depression")) OR (IndexTermsFilt: ("Major Depression")) OR (IndexTermsFilt: ("Persistent Depressive Disorder")) OR ((title: (depressi*)) OR (title: (TRD)) OR (title: (MDD)) OR (title: (dysthymi*)) OR (title: (melancholia*)) OR (title: ("involuntional psychos*")) OR (title: (unipolar*))) OR ((abstract: (depressi*)) OR (abstract: (TRD)) OR (abstract: (MDD)) OR (abstract: (dysthymi*)) OR (abstract: (melancholia*)) OR (abstract: ("involuntional	37

psychos*") OR (abstract: (unipolar*)) OR ((Keywords: (depressi*)) OR (Keywords: (TRD)) OR (Keywords: (MDD)) OR (Keywords: (dysthymi*)) OR (Keywords: (melancholia*)) OR (Keywords: ("involutional psychos*")) OR (Keywords: (unipolar*))) AND (((((IndexTermsFilt: ("Transcranial Magnetic Stimulation")) OR ((IndexTermsFilt: ("Repetitive Transcranial Brain Stimulation")) OR ((IndexTermsFilt: ("Theta Burst Stimulation")))) OR (((title: (transcranial*)) OR ((title: ("transcranial*")) NEAR/3 ((title: (magnetic*)) OR ((abstract: (transcranial*)) OR ((abstract: ("transcranial*")) NEAR/3 ((abstract: (magnetic*)) OR ((Keywords: (transcranial*)) OR ((Keywords: ("transcranial*")) NEAR/3 ((Keywords: (magnetic*)) OR (((title: (tms)) OR ((title: (rtms)) OR ((title: (atms)) OR ((title: (ptms)) OR ((title: (stms)) OR ((title: (dtms)) OR ((abstract: (tms)) OR ((abstract: (rtms)) OR ((abstract: (atms)) OR ((abstract: (ptms)) OR ((abstract: (stms)) OR ((abstract: (dtms)) OR ((Keywords: (tms)) OR ((Keywords: (rtms)) OR ((Keywords: (atms)) OR ((Keywords: (ptms)) OR ((Keywords: (stms)) OR ((Keywords: (dtms))))) OR (((title: (theta*)) AND ((title: (stimul*))) OR ((title: (tbs)) OR ((title: (ctbs)) OR ((title: (itbs)) OR ((title: (bltbs)) OR ((abstract: (theta*)) AND ((abstract: (stimul*))) OR ((abstract: (tbs)) OR ((abstract: (ctbs)) OR ((abstract: (itbs)) OR ((abstract: (bltbs)) OR ((Keywords: (theta*)) AND ((Keywords: (stimul*))) OR ((Keywords: (tbs)) OR ((Keywords: (ctbs)) OR ((Keywords: (itbs)) OR ((Keywords: (bltbs)) OR (((title: (coil*)) AND ((title: ("double cone*")) OR ((title: (figure)) OR ((title: (butterfly)) OR ((title: (h)))) OR ((abstract: (coil*)) AND ((abstract: ("double cone*")) OR ((abstract: (figure)) OR ((abstract: (butterfly)) OR ((abstract: (h)))) OR (((Keywords: (coil*)) AND (((Keywords: ("double cone*")) OR ((Keywords: (figure)) OR ((Keywords: (butterfly)) OR ((Keywords: (h)))))) OR (((title: ("deep tms*")) OR ((title: (magpro*)) OR ((title: (magstim*))) OR ((abstract: ("deep tms*")) OR ((abstract: (magpro*)) OR ((abstract: (magstim*))) OR ((Keywords: ("deep tms*")) OR ((Keywords: (magpro*)) OR ((Keywords: (magstim*)))))) AND ((title: (patient OR patients OR user)) NEAR/3 (title: (preference* OR preferred) OR title: (input OR experienc* OR value* OR perspective* OR perception* OR perceiv* OR expect* OR choice* OR choose* OR choosing OR participat* OR accept* OR adheren* OR adhere OR nonadheren* OR complian* OR noncomplian* OR willing* OR convenience OR convenient OR challenge* OR concern* OR limitation* OR "quality of life" OR "life quality" OR satisfact* OR satisfied OR dissatisfact* OR dissatisfied OR burden OR attitude* OR knowledge OR belie* OR opinion* OR understanding OR reacti* OR moti vati* OR motivated OR intention* OR involv* OR engag* OR consult* OR interact* OR dialog* OR conversation* OR decision* OR decide* OR deciding* OR empower* OR barrier* OR facilitator* OR priorit*)) OR (Keywords: (patient OR patients OR user)) NEAR/3 (Keywords: (preference* OR preferred) OR Keywords: (input OR experienc* OR value* OR perspective* OR perception* OR perceiv* OR expect* OR choice* OR choose* OR choosing OR participat* OR accept* OR adheren* OR adhere OR nonadheren* OR complian* OR noncomplian* OR willing* OR convenience OR convenient OR challenge* OR concern* OR limitation* OR "quality of life" OR "life

quality" OR satisfact* OR satisfied OR dissatisfact* OR dissatisfied OR burden OR attitude* OR knowledge OR belie* OR opinion* OR understanding OR reacti* OR motivati* OR motivated OR intention* OR involv* OR engag* OR consult* OR interact* OR dialog* OR conversation* OR decision* OR decide* OR deciding* OR empower* OR barrier* OR facilitator* OR priorit*) OR (title: ("patient reported" OR "patient centered*" OR "patient centred*" OR "patient focused" OR "treatment satisf*" OR "treatment refus*") OR title: ("quality of life" OR "life quality")) OR (Keywords: ("patient reported" OR "patient centered*" OR "patient centred*" OR "patient focused" OR "treatment satisf*" OR "treatment refus*") OR Keywords: ("quality of life" OR "life quality")) OR (title: (patient*) OR title: (user*)) NEAR/1 (title: (acceptance) OR title: (desire*) OR title: (view*) OR title: (focus) OR title: (expression*) OR title: (involvement*) OR title: (empowerment) OR title: (collaboration) OR title: (expert) OR title: (needs)) OR (abstract: (patient* OR user*)) NEAR/1 (abstract: (satisfaction OR preference* OR acceptance OR engagement OR perspective* OR desire* OR view* OR focus OR expression* OR experienc* OR attitude* OR involvement* OR decision* OR empowerment OR participation OR collaboration OR expert OR needs OR input OR compliance OR adherence OR perspective* OR involvement OR preference* OR experienc*)) OR (title: (partner OR partners OR couple* OR spouse* OR family OR families)) OR (IndexTermsFilt: ("Client Participation") OR IndexTermsFilt: ("Client Attitudes") OR IndexTermsFilt: ("Client Satisfaction") OR IndexTermsFilt: ("Treatment Compliance") OR IndexTermsFilt: ("Treatment Refusal") OR IndexTermsFilt: ("Treatment Dropouts") OR IndexTermsFilt: ("Health Attitudes") OR IndexTermsFilt: ("Mental Health (Attitudes Toward)") OR IndexTermsFilt: ("Mental Illness (Attitudes Toward)") OR IndexTermsFilt: ("Physical Illness (Attitudes Toward)") OR IndexTermsFilt: ("Public Health Attitudes") OR IndexTermsFilt: ("Vaccination Attitudes") OR IndexTermsFilt: ("Treatment Barriers") OR IndexTermsFilt: ("Health Knowledge") OR IndexTermsFilt: ("Health Education") OR IndexTermsFilt: ("Coping Behavior") OR IndexTermsFilt: ("Quality of Life") OR IndexTermsFilt: ("Health Related Quality of Life") OR IndexTermsFilt: ("Quality of Work Life") OR IndexTermsFilt: ("Qualitative Methods") OR IndexTermsFilt: ("Focus Group") OR IndexTermsFilt: ("Grounded Theory") OR IndexTermsFilt: ("Interpretative Phenomenological Analysis") OR IndexTermsFilt: ("Narrative Analysis") OR IndexTermsFilt: ("Semi-Structured Interview") OR IndexTermsFilt: ("Thematic Analysis") OR IndexTermsFilt: ("Interviews")))) AND Publication Type: Peer Reviewed Journal AND Year: 2019 To 2024

Search Databases: APA PsycInfo, APA PsycArticles, APA PsycTests, APA PsycTherapy

#4	(Title: patient OR patients OR user) NEAR/3 (Title: preference* OR preferred OR Title: input OR experienc* OR value* OR perspective* OR perception* OR perceiv* OR expect* OR choice* OR choose* OR choosing OR participat* OR accept* OR adhere* OR adhere OR nonadheren* OR complian* OR noncomplan* OR willing* OR convenience OR convenient OR challenge* OR concern* OR limitation* OR "quality of life" OR "life quality" OR satisfact* OR satisfied OR dissatisfact* OR dissatisfied OR burden OR attitude* OR knowledge OR belie* OR opinion* OR understanding OR reacti* OR motivati* OR motivated OR intention* OR involv* OR engag* OR consult* OR interact* OR dialog* OR conversation* OR decision* OR decide* OR deciding* OR empower* OR barrier* OR facilitator* OR priorit*) OR (Keywords: patient OR	437484
----	--	--------

patients OR user) *NEAR/3* (Keywords: preference* OR preferred OR Keywords: input OR experienc* OR value* OR perspective* OR perception* OR perceiv* OR expect* OR choice* OR choose* OR choosing OR participat* OR accept* OR adheren* OR adhere OR nonadheren* OR complian* OR noncomplian* OR willing* OR convenience OR convenient OR challenge* OR concern* OR limitation* OR "quality of life" OR "life quality" OR satisfact* OR satisfied OR dissatisfact* OR dissatisfied OR burden OR attitude* OR knowledge OR belie* OR opinion* OR understanding OR reacti* OR motivati* OR motivated OR intention* OR involv* OR engag* OR consult* OR interact* OR dialog* OR conversation* OR decision* OR decide* OR deciding* OR empower* OR barrier* OR facilitator* OR priorit*) OR Title: "patient reported" OR "patient centered*" OR "patient centred*" OR "patient focused" OR "treatment satisf*" OR "treatment refus*" OR Title: "quality of life" OR "life quality" OR Keywords: "patient reported" OR "patient centered*" OR "patient centred*" OR "patient focused" OR "treatment satisf*" OR "treatment refus*" OR Keywords: "quality of life" OR "life quality" OR (Title: patient* OR Title: user*) *NEAR/1* (Title: acceptance OR Title: desire* OR Title: view* OR Title: focus OR Title: expression* OR Title: involvement* OR Title: empowerment OR Title: collaboration OR Title: expert OR Title: needs) OR (Abstract: patient* OR user*) *NEAR/1* (Abstract: satisfaction OR preference* OR acceptance OR engagement OR perspective* OR desire* OR view* OR focus OR expression* OR experienc* OR attitude* OR involvement* OR decision* OR empowerment OR participation OR collaboration OR expert OR needs OR input OR compliance OR adherence OR perspective* OR involvement OR preference* OR experienc*) OR Title: partner OR partners OR couple* OR spouse* OR family OR families OR Index Terms: {Client Participation} OR {Client Attitudes} OR {Client Satisfaction} OR {Treatment Compliance} OR {Treatment Refusal} OR {Treatment Dropouts} OR {Health Attitudes} OR {Mental Health (Attitudes Toward)} OR {Mental Illness (Attitudes Toward)} OR {Physical Illness (Attitudes Toward)} OR {Public Health Attitudes} OR {Vaccination Attitudes} OR {Treatment Barriers} OR {Health Knowledge} OR {Health Education} OR {Coping Behavior} OR {Quality of Life} OR {Health Related Quality of Life} OR {Quality of Work Life} OR {Qualitative Methods} OR {Focus Group} OR {Grounded Theory} OR {Interpretative Phenomenological Analysis} OR {Narrative Analysis} OR {Semi-Structured Interview} OR {Thematic Analysis} OR {Interviews}

Search Databases: APA PsycInfo, APA PsycArticles, APA PsycTests, APA PsycTherapy

#3	((IndexTermsFilt: ("Anaclitic Depression") OR IndexTermsFilt: ("Dysthymic Disorder") OR IndexTermsFilt: ("Endogenous Depression") OR IndexTermsFilt: ("Late Life Depression") OR IndexTermsFilt: ("Postpartum Depression") OR IndexTermsFilt: ("Reactive Depression") OR IndexTermsFilt: ("Recurrent Depression") OR IndexTermsFilt: ("Treatment Resistant Depression") OR IndexTermsFilt: ("Major Depression") OR IndexTermsFilt: ("Persistent Depressive Disorder")) OR (title: (depressi*) OR title: (TRD) OR title: (MDD) OR title: (dysthymi*) OR title: (melancholia*) OR title: ("involuntional psychos*") OR title: (unipolar*)) OR (abstract: (depressi*) OR abstract: (TRD) OR abstract: (MDD) OR abstract: (dysthymi*) OR abstract: (melancholia*) OR abstract: ("involuntional psychos*") OR abstract: (unipolar*)) OR (Keywords: (depressi*) OR Keywords: (TRD) OR Keywords: (MDD) OR Keywords: (dysthymi*) OR Keywords: (melancholia*) OR Keywords:	2989
----	---	------

("involuntal psychos*") OR Keywords: (unipolar*)) AND (((IndexTermsFilt: ("Transcranial Magnetic Stimulation")) OR (IndexTermsFilt: ("Repetitive Transcranial Brain Stimulation")) OR (IndexTermsFilt: ("Theta Burst Stimulation"))) OR ((title: (transcranial*)) OR (title: ("trans-cranial*"))) NEAR/3 (title: (magnetic*)) OR ((abstract: (transcranial*)) OR (abstract: ("trans-cranial*"))) NEAR/3 (abstract: (magnetic*)) OR ((Keywords: (transcranial*)) OR (Keywords: ("trans-cranial*"))) NEAR/3 (Keywords: (magnetic*)) OR (((title: (tms)) OR (title: (rtms)) OR (title: (atms)) OR (title: (ptms)) OR (title: (stms)) OR (title: (dtms))) OR ((abstract: (tms)) OR (abstract: (rtms)) OR (abstract: (atms)) OR (abstract: (ptms)) OR (abstract: (stms)) OR (abstract: (dtms))) OR ((Keywords: (tms)) OR (Keywords: (rtms)) OR (Keywords: (atms)) OR (Keywords: (ptms)) OR (Keywords: (stms)) OR (Keywords: (dtms)))) OR (((title: (theta*)) AND (title: (stimul*))) OR (title: (tbs)) OR (title: (ctbs)) OR (title: (itbs)) OR (title: (bltbs)) OR ((abstract: (theta*)) AND (abstract: (stimul*))) OR (abstract: (tbs)) OR (abstract: (ctbs)) OR (abstract: (itbs)) OR (abstract: (bltbs)) OR ((Keywords: (theta*)) AND (Keywords: (stimul*))) OR (Keywords: (tbs)) OR (Keywords: (ctbs)) OR (Keywords: (itbs)) OR (Keywords: (bltbs))) OR (((title: (coil*)) AND ((title: ("double cone*")) OR (title: (figure)) OR (title: (butterfly)) OR (title: (h)))) OR ((abstract: (coil*)) AND ((abstract: ("double cone*")) OR (abstract: (figure)) OR (abstract: (butterfly)) OR (abstract: (h)))) OR ((Keywords: (coil*)) AND ((Keywords: ("double cone*")) OR (Keywords: (figure)) OR (Keywords: (butterfly)) OR (Keywords: (h)))) OR (((title: ("deep tms*")) OR (title: (magpro*)) OR (title: (magstim*))) OR ((abstract: ("deep tms*")) OR (abstract: (magpro*)) OR (abstract: (magstim*))) OR ((Keywords: ("deep tms*")) OR (Keywords: (magpro*)) OR (Keywords: (magstim*))))

Search Databases: APA PsycInfo, APA PsycArticles, APA PsycTests, APA PsycTherapy

#2	((IndexTermsFilt: ("Transcranial Magnetic Stimulation") OR IndexTermsFilt: ("Repetitive Transcranial Brain Stimulation") OR IndexTermsFilt: ("Theta Burst Stimulation")) OR (title: (transcranial*) OR title: ("trans-cranial*")) NEAR/3 (title: (magnetic*)) OR (abstract: (transcranial*) OR abstract: ("trans-cranial*")) NEAR/3 (abstract: (magnetic*)) OR (Keywords: (transcranial*) OR Keywords: ("trans-cranial*")) NEAR/3 (Keywords: (magnetic*)) OR ((title: (tms) OR title: (rtms) OR title: (atms) OR title: (ptms) OR title: (stms) OR title: (dtms)) OR (abstract: (tms) OR abstract: (rtms) OR abstract: (atms) OR abstract: (ptms) OR abstract: (stms) OR abstract: (dtms)) OR (Keywords: (tms) OR Keywords: (rtms) OR Keywords: (atms) OR Keywords: (ptms) OR Keywords: (stms) OR Keywords: (dtms))) OR ((title: (theta*) AND title: (stimul*)) OR title: (tbs) OR title: (ctbs) OR title: (itbs) OR title: (bltbs) OR (abstract: (theta*) AND abstract: (stimul*)) OR abstract: (tbs) OR abstract: (ctbs) OR abstract: (itbs) OR abstract: (bltbs) OR (Keywords: (theta*) AND Keywords: (stimul*)) OR Keywords: (tbs) OR Keywords: (ctbs) OR Keywords: (itbs) OR Keywords: (bltbs)) OR ((title: (coil*) AND (title: ("double cone*")) OR title: (figure) OR title: (butterfly) OR title: (h))) OR (abstract: (coil*) AND (abstract: ("double cone*")) OR abstract: (figure) OR abstract: (butterfly) OR abstract: (h))) OR (Keywords: (coil*) AND (Keywords: ("double cone*")) OR Keywords: (figure) OR Keywords: (butterfly) OR Keywords: (h)))) OR ((title: ("deep tms*") OR title: (magpro*) OR title: (magstim*)) OR (abstract: ("deep tms*") OR abstract: (magpro*) OR abstract:	17269
----	--	-------

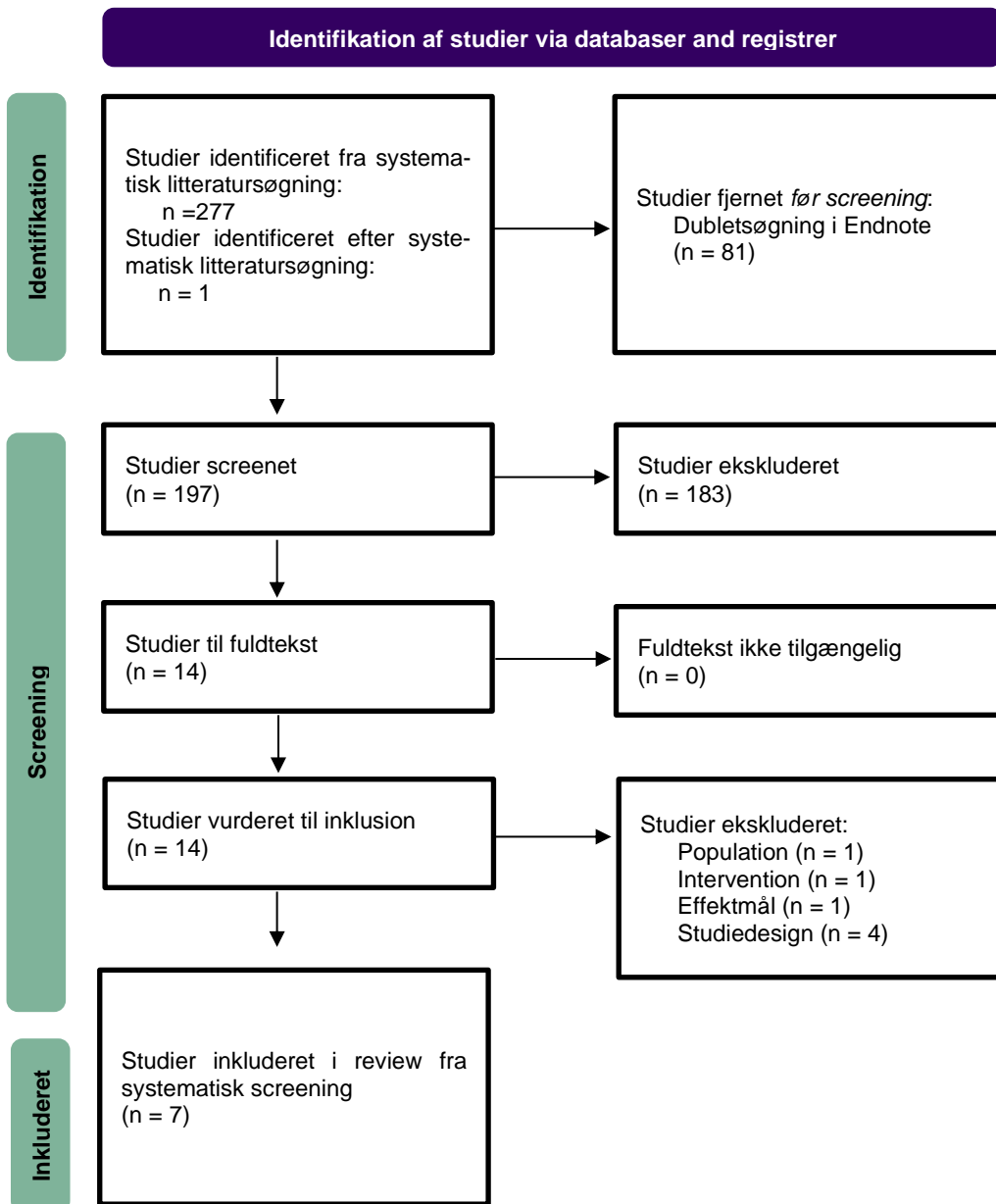
(magstim*) OR (Keywords: ("deep tms*") OR Keywords: (magpro*) OR Keywords: (magstim*))

Search Databases: APA PsycInfo, APA PsycArticles, APA PsycTests, APA PsycTherapy

#1	Index Terms: {Anaclitic Depression} OR {Dysthymic Disorder} OR {Endogenous Depression} OR {Late Life Depression} OR {Postpartum Depression} OR {Reactive Depression} OR {Recurrent Depression} OR {Treatment Resistant Depression} OR {Major Depression} OR {Persistent Depressive Disorder} OR Title: depressi* OR Title: TRD OR Title: MDD OR Title: dysthymi* OR Title: melancholia* OR Title: "involuntional psychos*" OR Title: unipolar* OR Abstract: depressi* OR Abstract: TRD OR Abstract: MDD OR Abstract: dysthymi* OR Abstract: melancholia* OR Abstract: "involuntional psychos*" OR Abstract: unipolar* OR Keywords: depressi* OR Keywords: TRD OR Keywords: MDD OR Keywords: dysthymi* OR Keywords: melancholia* OR Keywords: "involuntional psychos*" OR Keywords: unipolar*	364042
----	--	--------

Search Databases: APA PsycInfo, APA PsycArticles, APA PsycTests, APA PsycTherapy

3.1.2 Prismadiagram – Patientperspektivet



4

Bilag til Organisatoriske Implikationer

4.1 Litteraturgennemgang for Organisatoriske Implikationer

4.1.1 Søgehistorik for Organisatoriske Implikationer

Tabel 5 - Resultater af søgning efter primær litteratur til belysning af Organisatoriske Implikationer.

Database	Platform	Resultat	Dato
PubMed	PubMed.gov	49	13.03.2024
Embase	Embase.com	51	13.03.2024
CINAHL with Full Text	EBSCOhost	41	13.03.2024
I alt		141	
÷ dubletter vha. EndNote		101	

PubMed

Search	Query	Results
#7	Search: (((((((("Transcranial Magnetic Stimulation"[Mesh]) OR (((transcranial*[Title/Abstract] OR trans-cranial*[Title/Abstract]) AND magnetic*[Title/Abstract]) OR TMS[Title/Abstract] OR rTMS[Title/Abstract] OR aTMS[Title/Abstract] OR pTMS[Title/Abstract] OR sTMS[Title/Abstract] OR dTMS[Title/Abstract])) OR ((theta*[Title/Abstract] AND stimul*[Title/Abstract]) OR TBS[Title/Abstract] OR cTBS[Title/Abstract] OR iTBS[Title/Abstract] OR bITBS[Title/Abstract])) OR (coil*[Title/Abstract] AND (double cone*[Title/Abstract] OR figure[Title/Abstract] OR butterfly[Title/Abstract] OR H[Title/Abstract]))) OR (Deep TMS*[Title/Abstract] OR Magpro*[Title/Abstract] OR Magstim*[Title/Abstract])) AND (((("Depression"[Mesh]) OR ("Depressive Disorder"[Mesh])) OR (depressi*[Title/Abstract] OR TRD[Title/Abstract] OR MDD[Title/Abstract] OR dysthymi*[Title/Abstract] OR melancholia*[Title/Abstract] OR involuntal psychos*[Title/Abstract] OR unipolar*[Title/Abstract]))) AND ("Patient Care Management"[Mesh:NoExp] OR "Efficiency, Organizational"[Mesh] OR Health Workforce / organization & administration[Mesh] OR "Organizational Innovation"[Mesh] OR Organizational Culture[Mesh] OR "Change Management"[Mesh] OR "Professional Role"[Mesh] OR "Health Plan Implementation"[Mesh] OR "Staff Development"[Mesh] OR "Competency-Based Education"[Mesh] OR "Education, Continuing"[Mesh] OR "Primary Health Care"[Mesh] OR "Capacity Building"[Mesh] OR "Clinical Competence"[Mesh] OR "Preceptorship"[Mesh] OR "Health Planning"[Mesh] OR "Facilities and Services Utilization"[Mesh] OR "Health Facility Administration"[Mesh] OR "Efficiency, Organizational"[Mesh] OR "Organization and Administration"[Mesh:NoExp] OR cross-sector*[Title/Abstract] OR treatment capacit*[Title/Abstract] OR capacity assessment*[Title/Abstract] OR care transition*[Title/Abstract] OR process description*[Title/Abstract] OR course description*[Title/Abstract] OR clinical	49

pathway*[Title/Abstract] OR patient pathway*[Title/Abstract] OR organizational[Title/Abstract] OR organisational[Title/Abstract] OR hospitalization*[Title/Abstract] OR education[Title/Abstract] OR supervision*[Title/Abstract] OR competenc*[Title/Abstract])) AND ("2014"[Date - Publication] : "2024"[Date - Publication])) AND (Danish[Language] OR English[Language] OR Norwegian[Language] OR Swedish[Language]) Sort by: Publication Date

#6 Search: ((((((("Transcranial Magnetic Stimulation"[Mesh]) OR (((transcranial*[Title/Abstract] OR trans-cranial*[Title/Abstract]) AND magnetic*[Title/Abstract]) OR TMS[Title/Abstract] OR rTMS[Title/Abstract] OR aTMS[Title/Abstract] OR pTMS[Title/Abstract] OR sTMS[Title/Abstract] OR dTMS[Title/Abstract])) OR ((theta*[Title/Abstract] AND stimul*[Title/Abstract]) OR TBS[Title/Abstract] OR cTBS[Title/Abstract] OR iTBS[Title/Abstract] OR bITBS[Title/Abstract])) OR (coil*[Title/Abstract] AND (double cone*[Title/Abstract] OR figure[Title/Abstract] OR butterfly[Title/Abstract] OR H[Title/Abstract])))) OR (Deep TMS*[Title/Abstract] OR Magpro*[Title/Abstract] OR Magstim*[Title/Abstract])) AND (((("Depression"[Mesh]) OR ("Depressive Disorder"[Mesh]) OR (depressi*[Title/Abstract] OR TRD[Title/Abstract] OR MDD[Title/Abstract] OR dysthymi*[Title/Abstract] OR melancholia*[Title/Abstract] OR involuntal psychos*[Title/Abstract] OR unipolar*[Title/Abstract])) AND ("Patient Care Management"[Mesh:NoExp] OR "Efficiency, Organizational"[Mesh] OR Health Workforce / organization & administration[Mesh] OR "Organizational Innovation"[Mesh] OR Organizational Culture[Mesh] OR "Change Management"[Mesh] OR "Professional Role"[Mesh] OR "Health Plan Implementation"[Mesh] OR "Staff Development"[Mesh] OR "Competency-Based Education"[Mesh] OR "Education, Continuing"[Mesh] OR "Primary Health Care"[Mesh] OR "Capacity Building"[Mesh] OR "Clinical Competence"[Mesh] OR "Preceptorship"[Mesh] OR "Health Planning"[Mesh] OR "Facilities and Services Utilization"[Mesh] OR "Health Facility Administration"[Mesh] OR "Efficiency, Organizational"[Mesh] OR "Organization and Administration"[Mesh:NoExp] OR cross-sector*[Title/Abstract] OR treatment capacit*[Title/Abstract] OR capacity assessment*[Title/Abstract] OR care transition*[Title/Abstract] OR process description*[Title/Abstract] OR course description*[Title/Abstract] OR clinical pathway*[Title/Abstract] OR patient pathway*[Title/Abstract] OR organizational[Title/Abstract] OR organisational[Title/Abstract] OR hospitalization*[Title/Abstract] OR education[Title/Abstract] OR supervision*[Title/Abstract] OR competenc*[Title/Abstract]) Sort by: Publication Date

#5 Search: "Patient Care Management"[Mesh:NoExp] OR "Efficiency, Organizational"[Mesh] OR Health Workforce / organization & administration[Mesh] OR "Organizational Innovation"[Mesh] OR Organizational Culture[Mesh] OR "Change Management"[Mesh] OR "Professional Role"[Mesh] OR "Health Plan Implementation"[Mesh] OR "Staff Development"[Mesh] OR "Competency-Based Education"[Mesh] OR "Education, Continuing"[Mesh] OR "Primary Health Care"[Mesh] OR "Capacity Building"[Mesh] OR "Clinical Competence"[Mesh] OR "Preceptorship"[Mesh] OR "Health Planning"[Mesh] OR "Facilities and Services Utilization"[Mesh] OR "Health Facility Administration"[Mesh] OR "Efficiency, Organizational"[Mesh] OR "Organization and Administration"[Mesh:NoExp] OR cross-sector*[Title/Abstract] OR treatment capacit*[Title/Abstract] OR capacity assessment*[Title/Abstract] OR care transition*[Title/Abstract] OR process description*[Title/Abstract] OR course description*[Title/Abstract] OR clinical pathway*[Title/Abstract] OR patient pathway*[Title/Abstract] OR organizational[Title/Abstract] OR organisational[Title/Abstract] OR hospitalization*[Title/Abstract] OR education[Title/Abstract] OR supervision*[Title/Abstract] OR competenc*[Title/Abstract] Sort by: Publication Date

#4 Search: ((((((("Transcranial Magnetic Stimulation"[Mesh]) OR (((transcranial*[Title/Abstract] OR trans-cranial*[Title/Abstract]) AND magnetic*[Title/Abstract]) OR TMS[Title/Abstract] OR rTMS[Title/Abstract] OR aTMS[Title/Abstract] OR pTMS[Title/Abstract] OR sTMS[Title/Abstract] OR dTMS[Title/Abstract])) OR ((theta*[Title/Abstract] AND stimul*[Title/Abstract]) OR TBS[Title/Abstract] OR cTBS[Title/Abstract] OR iTBS[Title/Abstract] OR

bITBS[Title/Abstract])) OR (coil*[Title/Abstract] AND (double cone*[Title/Abstract] OR figure[Title/Abstract] OR butterfly[Title/Abstract] OR H[Title/Abstract])))) OR (Deep TMS*[Title/Abstract] OR Magpro*[Title/Abstract] OR Magstim*[Title/Abstract])) AND (((("Depression"[Mesh]) OR ("Depressive Disorder"[Mesh])) OR (depressi*[Title/Abstract] OR TRD[Title/Abstract] OR MDD[Title/Abstract] OR dysthymi*[Title/Abstract] OR melancholia*[Title/Abstract] OR involuntal psychos*[Title/Abstract] OR unipolar*[Title/Abstract])) Sort by: Publication Date

#3 Search: (((("Depression"[Mesh]) OR ("Depressive Disorder"[Mesh])) OR (depressi*[Title/Abstract] OR TRD[Title/Abstract] OR MDD[Title/Abstract] OR dysthymi*[Title/Abstract] OR melancholia*[Title/Abstract] OR involuntal psychos*[Title/Abstract] OR unipolar*[Title/Abstract])) Sort by: Publication Date 566,686

#2 Search: (((("Transcranial Magnetic Stimulation"[Mesh]) OR (((transcranial*[Title/Abstract] OR trans-cranial*[Title/Abstract]) AND magnetic*[Title/Abstract]) OR TMS[Title/Abstract] OR rTMS[Title/Abstract] OR aTMS[Title/Abstract] OR pTMS[Title/Abstract] OR sTMS[Title/Abstract] OR dTMS[Title/Abstract])) OR ((theta*[Title/Abstract] AND stimul*[Title/Abstract]) OR TBS[Title/Abstract] OR cTBS[Title/Abstract] OR iTBS[Title/Abstract] OR bITBS[Title/Abstract])) OR (coil*[Title/Abstract] AND (double cone*[Title/Abstract] OR figure[Title/Abstract] OR butterfly[Title/Abstract] OR H[Title/Abstract])))) OR (Deep TMS*[Title/Abstract] OR Magpro*[Title/Abstract] OR Magstim*[Title/Abstract]) Sort by: Publication Date 50,646

Embase

No.	Query	Results
#14	#13 NOT 'conference abstract'/it	51
#13	#10 AND #11 AND ([danish]/lim OR [english]/lim OR [norwegian]/lim OR [swedish]/lim) AND [2014-2024]/py	129
#12	#10 AND #11	149
#11	'advance care planning'/mj OR 'case management'/mj OR 'patient care planning'/mj OR 'patient scheduling'/mj OR 'health care management'/exp/mj OR 'management'/exp/mj OR 'organizational structure'/exp/mj OR 'organizational culture'/exp/mj OR 'professional standard'/exp/mj OR 'continuing education'/mj OR 'clinical pathway'/mj OR 'health care personnel management'/exp/mj OR 'capacity building'/mj OR 'primary health care'/exp/mj OR 'clinical competence'/mj OR 'facilities and services utilization'/exp/mj OR 'health care planning'/exp/mj OR 'process description*':ti,ab,kw OR 'course description*':ti,ab,kw OR 'clinical pathway*':ti,ab,kw OR 'patient pathway*':ti,ab,kw OR organizational:ti,ab,kw OR organisational:ti,ab,kw OR hospitalization*':ti,ab,kw OR education:ti,ab,kw OR 'cross-sector*':ti,ab,kw OR 'treatment capacit*':ti,ab,kw OR 'capacity assessment*':ti,ab,kw OR 'care transition*':ti,ab,kw OR supervision*':ti,ab,kw OR competenc*':ti,ab,kw	2152551
#10	#3 AND #9	7101
#9	#4 OR #5 OR #6 OR #7 OR #8	67947
#8	'deep tms*':ti,ab,kw OR magpro*':ti,ab,kw OR magstim*':ti,ab,kw	584

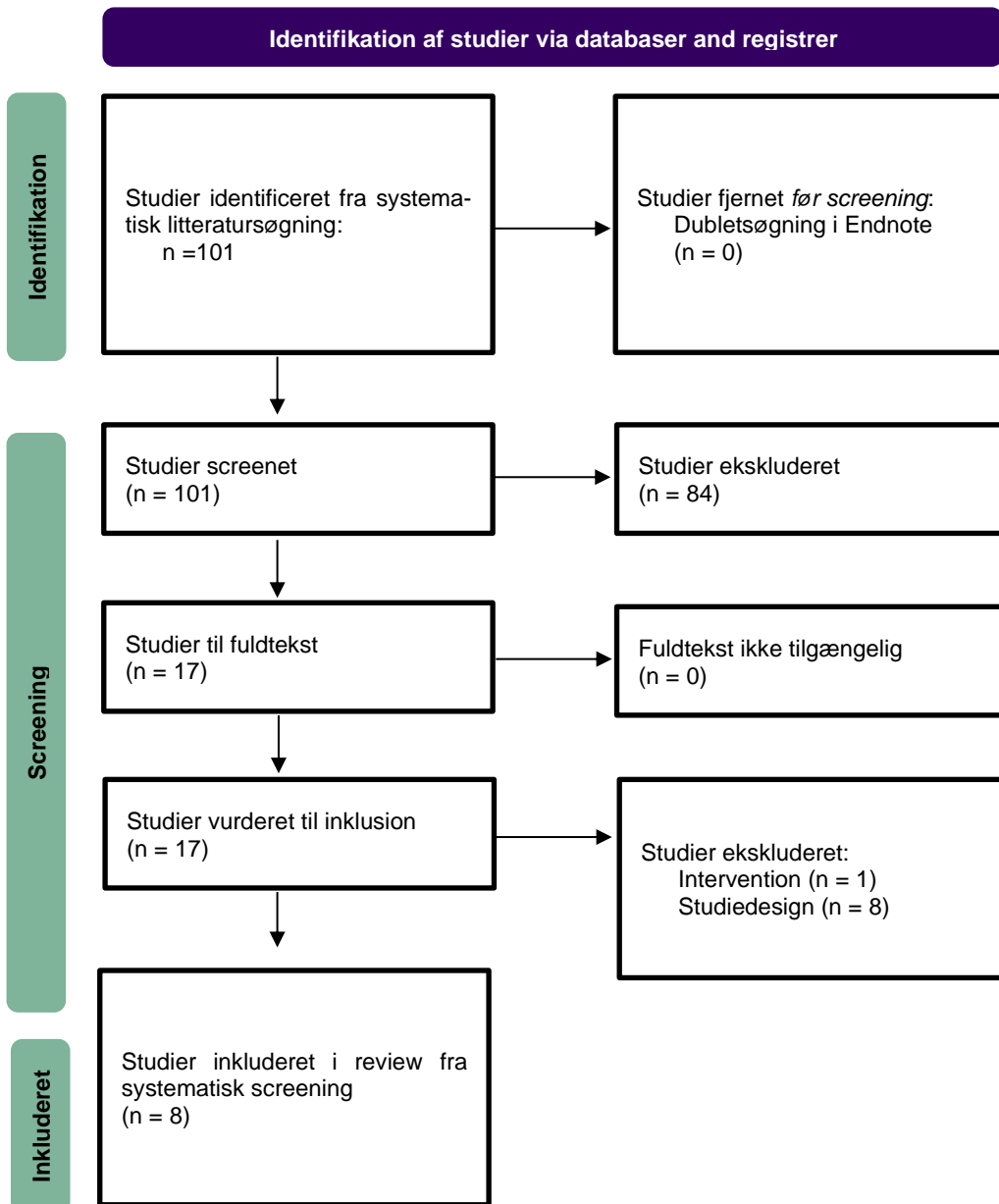
#7	coil*:ti,ab,kw AND ('double cone*:ti,ab,kw OR figure:ti,ab,kw OR butterfly:ti,ab,kw OR h:ti,ab,kw)	9010
#6	theta*:ti,ab,kw AND stimul*:ti,ab,kw OR tbs:ti,ab,kw OR ctbs:ti,ab,kw OR itbs:ti,ab,kw OR bltbs:ti,ab,kw	15731
#5	((((transcranial* OR 'trans-cranial*') NEAR/3 magnetic*):ti,ab,kw) OR tms:ti,ab,kw OR rtms:ti,ab,kw OR atms:ti,ab,kw OR ptms:ti,ab,kw OR stms:ti,ab,kw OR dtms:ti,ab,kw	46513
#4	'transcranial magnetic stimulation'/exp/mj	14900
#3	#1 OR #2	727089
#2	depressi*:ti,ab,kw OR trd:ti,ab,kw OR mdd:ti,ab,kw OR dysthymi*:ti,ab,kw OR melancholia*:ti,ab,kw OR 'involuntal psychos*:ti,ab,kw OR unipolar*:ti,ab,kw	711960
#1	'major depression'/exp	85870

CINAHL

#	Query	Limiters/Expanders	Results
S14	S11 AND S12	Limiters - Publication Date: 20140101-20241231; Language: Danish, English, Norwegian, Swedish	41
S13	S11 AND S12		63
S12	(MH "Transitional Care") OR (MH "Continuity of Patient Care+") OR (MH "Primary Health Care") OR (MH "Program Implementation") OR (MH "Staff Development+") OR (MH "Education, Competency-Based") OR (MH "Education, Continuing+") OR (MH "Management+") OR (MH "Health Resource Allocation") OR (MH "Patient Care Plans+") OR (MH "Health Resource Utilization+") OR (MH "Bed Occupancy") OR (MH "Clinical Competence+") OR (MH "Health Resource Allocation") OR cross sector* OR treatment capacit* OR capacity assessment* OR care transition* OR process description* OR course description* OR clinical pathway* OR patient pathway* OR organizational OR organisational OR hospitalization* OR education OR supervision* OR competenc*		2,009,983
S11	S3 AND S10		1,051
S10	S4 OR S5 OR S6 OR S7 OR S8 OR S9		8,822
S9	deep tms* OR magpro* OR magstim*		34
S8	coil* AND (double cone* OR figure OR butterfly OR h)		228
S7	(theta* AND stimul*) OR tbs OR ctbs OR itbs OR bltbs		1,729

S6	tms OR rtms OR atms OR ptms OR stms OR dtms	5,184
S5	(transcranial* OR trans-cranial*) N3 magnetic*	4,135
S4	(MH "Transcranial Magnetic Stimulation")	1,955
S3	S1 OR S2	222,652
S2	depressi* OR TRD OR MDD OR dysthymi* OR melancholia* OR involuntional psychos* OR unipolar*	222,652
S1	(MH "Depression+")	139,100

4.1.2 Prismadiagram – Organisatoriske implikationer



5

Bilag til sundhedsøkonomi

5.1 Litteraturgennemgang for Sundhedsøkonomi

5.1.1 Søgehistorik - Transkraniel magnetisk stimulation (TMS) ved depression

Tabel 6 – Resultater af søgning efter primærlitteratur til belysning af det sundhedsøkonomiske perspektiv.

Database	Platform	Resultat	Dato
PubMed	PubMed.gov	44	06.02.2024
Embase	Embase.com	140	06.02.2024
CINAHL with Full Text	EBSCOhost	6	06.02.2024
I alt		190	
÷ dubletter vha. EndNote		145	

PubMed

Search	Query	Results
#6	Search: (((("Depression"[Mesh] OR "Depressive Disorder"[Mesh] OR depressi*[Title/Abstract] OR TRD[Title/Abstract] OR MDD[Title/Abstract] OR dysthymi*[Title/Abstract] OR melancholia*[Title/Abstract] OR involuntal psychos*[Title/Abstract] OR unipolar*[Title/Abstract]) AND ("Transcranial Magnetic Stimulation"[Mesh] OR ((transcranial*[Title/Abstract] OR trans-cranial*[Title/Abstract]) AND magnetic*[Title/Abstract]) OR TMS[Title/Abstract] OR rTMS[Title/Abstract] OR aTMS[Title/Abstract] OR pTMS[Title/Abstract] OR sTMS[Title/Abstract] OR dTMS[Title/Abstract] OR (theta*[Title/Abstract] AND stimu*[Title/Abstract]) OR TBS[Title/Abstract] OR cTBS[Title/Abstract] OR iTBS[Title/Abstract] OR bITBS[Title/Abstract] OR (coil*[Title/Abstract] AND (double cone*[Title/Abstract] OR figure[Title/Abstract] OR butterfly[Title/Abstract] OR H[Title/Abstract])) OR Deep TMS*[Title/Abstract] OR Magpro*[Title/Abstract] OR Magstim*[Title/Abstract])) AND ("Economics"[Mesh:NoExp] OR "Costs and Cost Analysis"[mh] OR "Economics, Nursing"[mh] OR "Economics, Medical"[mh] OR "Economics, Pharmaceutical"[mh] OR "Economics, Hospital"[mh] OR "Economics, Dental"[mh] OR "Fees and Charges"[mh] OR "Budgets"[mh] OR budget*[tiab] OR economic*[tiab] OR cost[tiab] OR costs[tiab] OR costly[tiab] OR costing[tiab] OR price[tiab] OR prices[tiab] OR pricing[tiab] OR pharmaco-economic*[tiab] OR "pharmaco-economic"*[tiab] OR expenditure[tiab] OR expenditures[tiab] OR expense[tiab] OR expenses[tiab] OR financial[tiab] OR finance[tiab] OR finances[tiab] OR financed[tiab] OR "value for money"[tiab] OR "monetary value"*[tiab] OR "models, economic"[mh] OR "economic model"*[tiab] OR "markov chains"[mh] OR markov[tiab] OR "monte carlo method"[mh] OR "monte carlo"[tiab] OR "Decision Theory"[mh] OR "decision tree"*[tiab] OR "decision analy"*[tiab] OR "decision model"*[tiab])) AND (("2021"[Date - Publication] : "2024"[Date - Publication])) AND	44

(Danish[Language] OR English[Language] OR Norwegian[Language] OR Swedish[Language]) Sort by: Publication Date

#5 Search: (("Depression"[Mesh] OR "Depressive Disorder"[Mesh] OR depressi*[Title/Abstract] OR TRD[Title/Abstract] OR MDD[Title/Abstract] OR dysthymi*[Title/Abstract] OR melancholia*[Title/Abstract] OR involuntal psychos*[Title/Abstract] OR unipolar*[Title/Abstract]) AND ("Transcranial Magnetic Stimulation"[Mesh] OR ((transcranial*[Title/Abstract] OR trans-cranial*[Title/Abstract]) AND magnetic*[Title/Abstract]) OR TMS[Title/Abstract] OR rTMS[Title/Abstract] OR aTMS[Title/Abstract] OR pTMS[Title/Abstract] OR sTMS[Title/Abstract] OR dTMS[Title/Abstract] OR (theta*[Title/Abstract] AND stimul*[Title/Abstract]) OR TBS[Title/Abstract] OR cTBS[Title/Abstract] OR iTBS[Title/Abstract] OR bITBS[Title/Abstract] OR (coil*[Title/Abstract] AND (double cone*[Title/Abstract] OR figure[Title/Abstract] OR butterfly[Title/Abstract] OR H[Title/Abstract])) OR Deep TMS*[Title/Abstract] OR Magpro*[Title/Abstract] OR Magstim*[Title/Abstract])) AND ("Economics"[Mesh:NoExp] OR "Costs and Cost Analysis"[mh] OR "Economics, Nursing"[mh] OR "Economics, Medical"[mh] OR "Economics, Pharmaceutical"[mh] OR "Economics, Hospital"[mh] OR "Economics, Dental"[mh] OR "Fees and Charges"[mh] OR "Budgets"[mh] OR budget*[tiab] OR economic*[tiab] OR cost[tiab] OR costs[tiab] OR costly[tiab] OR costing[tiab] OR price[tiab] OR prices[tiab] OR pricing[tiab] OR pharmaco-economic*[tiab] OR "pharmaco-economic*" [tiab] OR expenditure[tiab] OR expenditures[tiab] OR expense[tiab] OR expenses[tiab] OR financial[tiab] OR finance[tiab] OR finances[tiab] OR financed[tiab] OR "value for money"[tiab] OR "monetary value*" [tiab] OR "models, economic"[mh] OR "economic model*" [tiab] OR "markov chains"[mh] OR markov[tiab] OR "monte carlo method"[mh] OR "monte carlo" [tiab] OR "Decision Theory"[mh] OR "decision tree*" [tiab] OR "decision analy*" [tiab] OR "decision model*" [tiab]) Sort by: Publication Date 139

#4 Search: "Economics"[Mesh:NoExp] OR "Costs and Cost Analysis"[mh] OR "Economics, Nursing"[mh] OR "Economics, Medical"[mh] OR "Economics, Pharmaceutical"[mh] OR "Economics, Hospital"[mh] OR "Economics, Dental"[mh] OR "Fees and Charges"[mh] OR "Budgets"[mh] OR budget*[tiab] OR economic*[tiab] OR cost[tiab] OR costs[tiab] OR costly[tiab] OR costing[tiab] OR price[tiab] OR prices[tiab] OR pricing[tiab] OR pharmaco-economic*[tiab] OR "pharmaco-economic*" [tiab] OR expenditure[tiab] OR expenditures[tiab] OR expense[tiab] OR expenses[tiab] OR financial[tiab] OR finance[tiab] OR finances[tiab] OR financed[tiab] OR "value for money"[tiab] OR "monetary value*" [tiab] OR "models, economic"[mh] OR "economic model*" [tiab] OR "markov chains"[mh] OR markov[tiab] OR "monte carlo method"[mh] OR "monte carlo" [tiab] OR "Decision Theory"[mh] OR "decision tree*" [tiab] OR "decision analy*" [tiab] OR "decision model*" [tiab] Sort by: Publication Date 1,531,013

#3 Search: ("Depression"[Mesh] OR "Depressive Disorder"[Mesh] OR depressi*[Title/Abstract] OR TRD[Title/Abstract] OR MDD[Title/Abstract] OR dysthymi*[Title/Abstract] OR melancholia*[Title/Abstract] OR involuntal psychos*[Title/Abstract] OR unipolar*[Title/Abstract]) AND ("Transcranial Magnetic Stimulation"[Mesh] OR ((transcranial*[Title/Abstract] OR trans-cranial*[Title/Abstract]) AND magnetic*[Title/Abstract]) OR TMS[Title/Abstract] OR rTMS[Title/Abstract] OR aTMS[Title/Abstract] OR pTMS[Title/Abstract] OR sTMS[Title/Abstract] OR dTMS[Title/Abstract] OR (theta*[Title/Abstract] AND stimul*[Title/Abstract]) OR TBS[Title/Abstract] OR cTBS[Title/Abstract] OR iTBS[Title/Abstract] OR bITBS[Title/Abstract] OR (coil*[Title/Abstract] AND (double cone*[Title/Abstract] OR figure[Title/Abstract] OR butterfly[Title/Abstract] OR H[Title/Abstract])) OR Deep TMS*[Title/Abstract] OR Magpro*[Title/Abstract] OR Magstim*[Title/Abstract]) Sort by: Publication Date 4,411

#2 Search: "Transcranial Magnetic Stimulation"[Mesh] OR ((transcranial*[Title/Abstract] OR trans-cranial*[Title/Abstract]) AND magnetic*[Title/Abstract]) OR TMS[Title/Abstract] OR rTMS[Title/Abstract] OR aTMS[Title/Abstract] OR pTMS[Title/Abstract] OR sTMS[Title/Abstract] OR dTMS[Title/Abstract] OR (theta*[Title/Abstract] AND stimul*[Title/Abstract]) OR TBS[Title/Abstract] OR cTBS[Title/Abstract] OR iTBS[Title/Abstract] OR 50,286

bITBS[Title/Abstract] OR (coil*[Title/Abstract] AND (double cone*[Title/Abstract] OR figure[Title/Abstract] OR butterfly[Title/Abstract] OR H[Title/Abstract])) OR Deep TMS*[Title/Abstract] OR Magpro*[Title/Abstract] OR Magstim*[Title/Abstract] Sort by: Publication Date

#1 Search: "Depression"[Mesh] OR "Depressive Disorder"[Mesh] OR depressi*[Title/Abstract] OR TRD[Title/Abstract] OR MDD[Title/Abstract] OR dysthymi*[Title/Abstract] OR melancholia*[Title/Abstract] OR involuntal psychos*[Title/Abstract] OR unipolar*[Title/Abstract] Sort by: Publication Date 563,304

Embase

No.	Query	Results
#13	#10 AND #11 AND ([danish]/lim OR [english]/lim OR [norwegian]/lim OR [swedish]/lim) AND [2021-2024]/py	140
#12	#10 AND #11	452
#11	'economics'/exp OR 'cost'/exp OR 'health economics'/exp OR 'budget'/de OR budget*:ti,ab,kw OR economic*:ti,ab,kw OR cost:ti,ab,kw OR costs:ti,ab,kw OR costly:ti,ab,kw OR costing:ti,ab,kw OR price:ti,ab,kw OR prices:ti,ab,kw OR pricing:ti,ab,kw OR pharmaco-economic*:ti,ab,kw OR 'pharmaco-economic*':ti,ab,kw OR expenditure:ti,ab,kw OR expenditures:ti,ab,kw OR expense:ti,ab,kw OR expenses:ti,ab,kw OR financial:ti,ab,kw OR finance:ti,ab,kw OR finances:ti,ab,kw OR financed:ti,ab,kw OR ((cost* NEAR/2 (effective* OR utilit* OR benefit* OR minimi* OR analy* OR outcome OR outcomes)):ti,ab,kw) OR ((value NEAR/2 (money OR monetary)):ti,ab,kw) OR 'statistical model'/exp OR 'economic model*':ti,ab,kw OR 'probability'/exp OR 'markov chain'/exp OR markov:ti,ab,kw OR 'monte carlo method'/exp OR 'monte carlo':ti,ab,kw OR 'decision theory'/de OR 'decision tree'/de OR ((decision* NEAR/2 (tree* OR analy* OR model*)):ti,ab,kw)	3266199
#10	#3 AND #9	7029
#9	#4 OR #5 OR #6 OR #7 OR #8	67947
#8	'deep tms*':ti,ab,kw OR magpro*':ti,ab,kw OR magstim*':ti,ab,kw	584
#7	coil*:ti,ab,kw AND ('double cone*':ti,ab,kw OR figure:ti,ab,kw OR butterfly:ti,ab,kw OR h:ti,ab,kw)	9010
#6	theta*:ti,ab,kw AND stimul*:ti,ab,kw OR tbs:ti,ab,kw OR ctbs:ti,ab,kw OR itbs:ti,ab,kw OR bltbs:ti,ab,kw	15731
#5	((transcranial* OR 'trans-cranial*') NEAR/3 magnetic*):ti,ab,kw) OR tms:ti,ab,kw OR rtms:ti,ab,kw OR atms:ti,ab,kw OR ptms:ti,ab,kw OR stms:ti,ab,kw OR dtms:ti,ab,kw	46513
#4	'transcranial magnetic stimulation'/exp/mj	14900
#3	#1 OR #2	727089

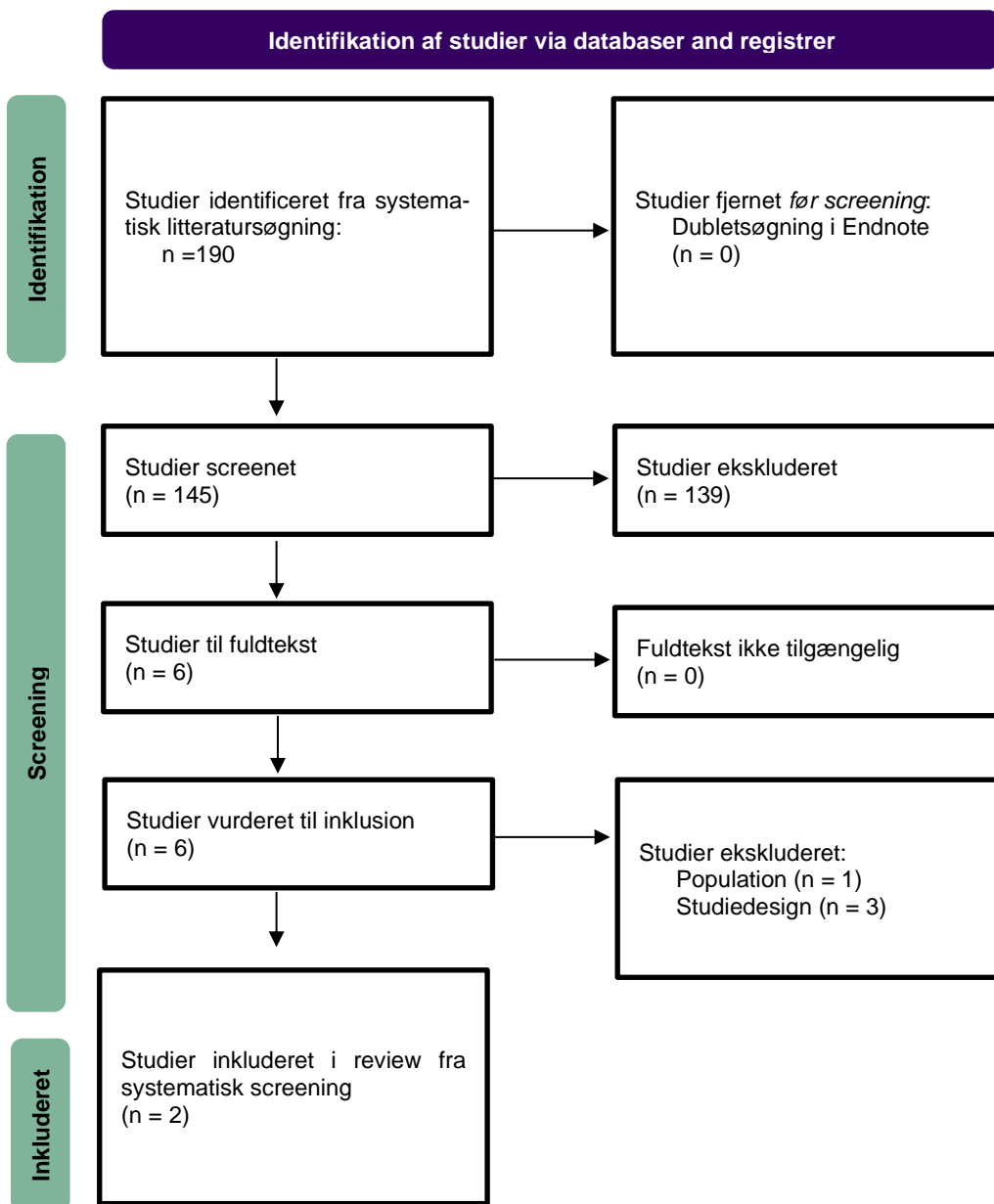
#2	depressi*:ti,ab,kw OR trd:ti,ab,kw OR mdd:ti,ab,kw OR dysthymi*:ti,ab,kw OR melancholia*:ti,ab,kw OR 'involuntal psychos*:ti,ab,kw OR unipolar*:ti,ab,kw	711960
#1	'major depression'/exp	85870

CINAHL

#	Query	Limiters/Expanders	Results
S14	S11 AND S12	Limiters - Publication Date: 20210101-20241231; Language: Danish, English, Norwegian, Swedish	6
S13	S11 AND S12		41
S12	MH "Economics" OR MH "Costs and Cost Analysis+" OR MH "Economic Aspects of Illness" OR MH "Resource Allocation+" OR MH "Economic Value of Life" OR MH "Economics, Pharmaceutical" OR MH "Economics, Dental" OR MH "Fees and Charges+" OR MH "Budgets" OR MH "Decision Trees" OR TI budget* OR TI (economic* OR cost OR costs OR costly OR costing OR price OR prices OR pricing OR pharmacoeconomic* OR "pharmacoeconomic*" OR expenditure OR expenditures OR expense OR expenses OR financial OR finance OR finances OR financed) OR TI (cost* N2 (effective* OR utilit* OR benefit* OR minimi* OR analy* OR outcome OR outcomes)) OR TI (value N2 (money OR monetary)) OR TI (markov OR monte carlo) OR TI (decision* N2 (tree* OR analy* OR model*)) OR AB budget* OR AB (economic* OR cost OR costs OR costly OR costing OR price OR prices OR pricing OR pharmacoeconomic* OR "pharmaco-economic*" OR expenditure OR expenditures OR expense OR expenses OR financial OR finance OR finances OR financed) OR AB (cost* N2 (effective* OR utilit* OR benefit* OR minimi* OR analy* OR outcome OR outcomes)) OR AB (value N2 (money OR monetary)) OR AB (markov OR monte carlo) OR AB (decision* N2 (tree* OR analy* OR model*))		470,170
S11	S3 AND S10		1,072
S10	S4 OR S5 OR S6 OR S7 OR S8 OR S9		9,793
S9	deep tms* OR magpro* OR magstim*		35
S8	coil* AND (double cone* OR figure OR butterfly OR h)		819
S7	(theta* AND stimul*) OR tbs OR ctbs OR itbs OR bltbs		1,754
S6	tms OR rtms OR atms OR ptms OR stms OR dtms		5,596
S5	(transcranial* OR trans-cranial*) N3 magnetic*		4,167
S4	(MH "Transcranial Magnetic Stimulation")		1,938
S3	S1 OR S2		224,218

S2	depressi* OR TRD OR MDD OR dysthymi* OR melancholia* OR involuntal psychos* OR unipolar*	224,218
S1	(MH "Depression+")	138,156

5.1.2 Prisma diagram – sundhedsøkonomiske studier



5.2 Omkostninger forbundet med rTMS udtrappingsforløb

Udtrappingsbehandling foregår over en længere periode hvor der ligger en behandlingsplan for reduktion af behandlinger. Formålet er, at sikre sig, at behandlingseffekten, som er opnået under et akut behandlingsforløb, vedligeholdes. En fastlagt plan for udtrapping og løbende vurderinger af patientens tilstand sikrer ligeledes at en eventuel forværring af effekten fanges med mulighed for da at øge behandlingshyppigheden igen.

I en følsomhedsanalyse (scenarie 3) er der inkluderet omkostninger til udtrappingsforløb for patienter i rTMS behandling. Da der mangler evidens til at understøtte effekten af denne type behandlingsprotokol, er der ikke ændret i de øvrige inputs i den sundhedsøkonomiske model.

Tabel 7 – Personale og patientomkostninger for rTMS udtrappingsforløb med udgangspunkt i at et udtrappingsforløb består af 11 sessioner.

Parameter	Gennemsnits- omk. (DKK)	kilde	Kommentar
rTMS-behandlinger	3.549	Regional retningslinje	11 behandlinger
Konsultationer	2.230	Regional retningslinje	Konsultation ved psykiater efter 1, 2 og 3 mdr.
Patienttid og -transport	4.346	Behandlingsrådets tekniske bilag til omkostningsopgørelse	Inkluderer tid anvendt på behandling og kørsel til/fra sygehus
Kørsel regionalt afholdt	770	Estimat	Antagelse om at 10% af patienterne får betalt kørsel af regionerne
Teknologiomkostninger	890	Estimat	Kapacitetsberegning pr patient for udtrappingsforløb
Samlet omkostninger for rTMS udtrappingsforløb			11.785

5.3 Omkostninger forbundet med ECT-behandling

Omkostningsopgørelse for personaleressourcer og patientafholdte omkostninger forbundet med ECT-behandling fremgår af Tabel 8 til Tabel 11.

Personaleomkostninger forbundet med akut ECT-behandling

Tabel 8 – Regionale personaleomkostninger forbundet med et akut ECT-behandlingsforløb.

Parameter	Gennemsnitsomk. (DKK)	kilde	Kommentar
Opstart af behandling	1.087,44	Forløbsbeskrivelse og fagudvalget	2 x 30 time ved speciallæge.
ECT-behandlingsforløb	13.815,59	Forløbsbeskrivelse og fagudvalget	12 behandlinger.
Opfølgende konsultationer ved speciallæge	2.718,61	Forløbsbeskrivelse og fagudvalget	Opfølgning efter 6, 8, 10 og 12 behandlinger. 37,5 min pr gang ved speciallæge.
Indlæggelse på psykiatrisk afdeling	116.872	Forløbsbeskrivelse og fagudvalget	28 indlæggelsesdage.
Total forløb	134.493,64	Samlet personaleomkostninger pr akut ECT-behandlingsforløb (12 behandlinger)	

Personaleomkostninger forbundet med ECT-vedligeholdelsesbehandling

Tabel 9 – Regionale personaleomkostninger forbundet med ECT-vedligeholdelsesbehandling.

Parameter	Gennemsnitsomk. (DKK)	kilde	Kommentar
Behandlingssessioner	5.756,50	Forløbsbeskrivelse og fagudvalget	
Opfølgende konsultationer ved speciallæge	2.038,96	Forløbsbeskrivelse og fagudvalget	3 opfølgninger. 37,5 min pr gang ved speciallæge.
Total forløb	7.795,45	Samlet personaleomkostninger pr ECT-vedligeholdelsesbehandling	

Patientafholdte omkostninger forbundet med akut ECT-behandling

Tabel 10 – Patientafholdte omkostninger forbundet med et akut ECT-behandlingsforløb.

Parameter	Gennemsnits-omk. (DKK)	kilde	Kommentar
Opstart af behandling	138,92	Forløbsbeskrivelse og fagudvalget	30 min patienttid
Paraklinisk og somatisk undersøgelse	138,92	Forløbsbeskrivelse og fagudvalget	30 min patienttid
ECT-behandlingsforløb	6.223,62	Forløbsbeskrivelse og fagudvalget	12 behandlinger.
Opfølgende konsultationer ved speciallæge	694,60	Forløbsbeskrivelse og fagudvalget	Opfølgning efter 6, 8, 10 og 12 behandlinger. 37,5 min pr gang ved speciallæge.
Total forløb	7.196,06	Samlet patientafholdte omkostninger forbundet med akut ECT-behandlingsforløb	

Patientafholdte omkostninger forbundet med ECT-vedligeholdelsesbehandling

Tabel 11 – Patientafholdte omkostninger forbundet med ECT-vedligeholdelsesbehandling.

Parameter	Gennemsnits-omk. (DKK)	kilde	Kommentar
Behandlingssessioner	2.593,17	Forløbsbeskrivelse og fagudvalget	
Opfølgende konsultationer ved speciallæge	520,95	Forløbsbeskrivelse og fagudvalget	3 opfølgninger. 37,5 min pr gang ved speciallæge.
Transport (patientafholdt)	2.533	Forløbsbeskrivelse og fagudvalget	
Total forløb	5.647,12	Samlet patientafholdte omkostninger forbundet med ECT-vedligeholdelsesbehandling	

5.4 Sandsynligheden for effekt af ECT-behandling anvendt i følsomhedsanalyse (scenarie 1)

Parameter	Gennemsnitsestimat	Kilde
Sandsynlighed for respons	0,60	Beregning baseret på meta-analyseresultater
Sandsynlighed for remission	0,30	Beregning baseret på meta-analyseresultater
Sandsynlighed for tilbagefald med vedligeholdelsesbehandling (1. år)	0,308	Ontario Health 2021
Sandsynlighed for tilbagefald uden vedligeholdelsesbehandling (efterfølgende 2 år)	0,377	Ontario Health 2021

5.5 Resultater af one-way analyser

Tabel 12 - Oversigt over resultater af *one-way* følsomhedsanalyser på enkeltparametre. Den nedre - og øvre grænse rapporterer nye ICER resultater som er beregnet på baggrund af den enkelte parameters minimums- eller maksimumsværdi.

Parameter	Værdi			ICER (DKK/Effekt)	
	Base-case	Min.	Maks.	Nedre grænse	Øvre grænse
Halvårlig HRQoL ved svær depression	0,25	0,20	0,29	150.299	347.777
Halvårlig HRQoL forbundet med remission	0,40	0,32	0,48	165.275	287.498
Sandsynlighed (p) for respons ved rTMS	0,24	0,19	0,29	174.352	260.875
Halvårlig HRQoL forbundet med respons	0,36	0,29	0,43	176.524	259.240
Halvårlig HRQoL forbundet med at være i akut rTMS behandling	0,32	0,25	0,38	186.159	240.555
Sandsynlighed (p) for at opnå remission ved rTMS	0,18	0,14	0,21	205.929	214.090

5.6 Budgetkonsekvensanalyse

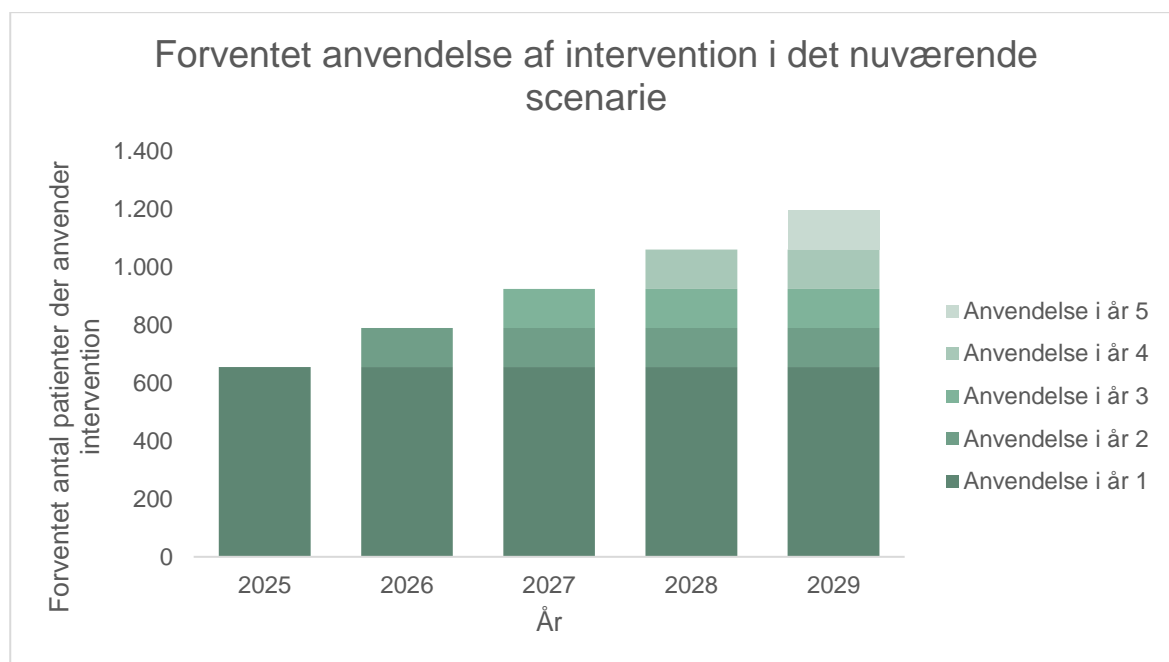
Nedenstående afsnit uddyber komponenter af metoden, som er anvendt til udarbejdelse af budgetkonsekvensanalysen.

5.6.1 Udvikling i anvendelse

Budgetkonsekvensanalysen reflekterer udelukkende forskellen i budgetterne ved anvendelse af intervention/komparator iht. det fokus der er relevant for budgetkonsekvensanalysen. I nærværende BIA er det vurderet relevant, at estimere budgetkonsekvenserne ved en positiv anbefaling af rTMS behandling som tillæg til standardbehandling sammenlignet med standardbehandling alene.

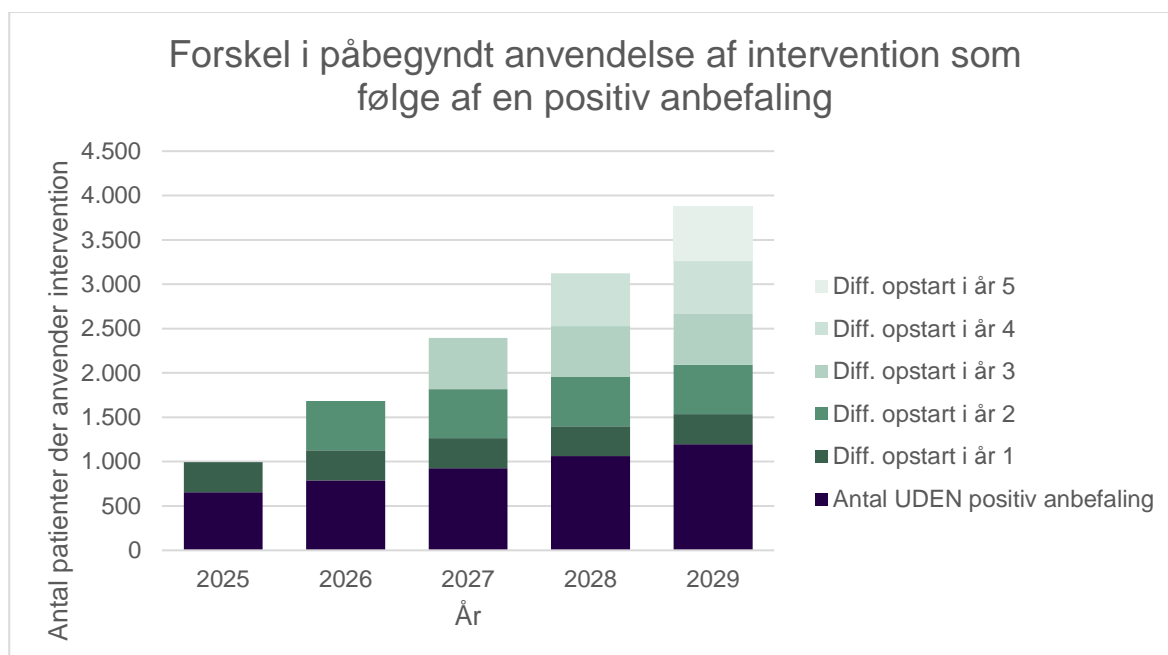
Figur 1 illustrerer forventninger til optaget i det nuværende markedsscenarie over BIA'ens løbetid. Som illustreret, er det fagudvalgets forventning, at der i et nuværende markedsscenarie, ses en positiv udvikling i optaget af rTMS-behandling på tværs af regionerne.

Figur 1 – Forventet antal patienter der anvender intervention i det nuværende scenarie over en femårige tidshorisont.



Figur 2 illustrerer fagudvalgets forventninger til et højere optag af rTMS-behandling på nationalt plan grundet en positiv anbefaling. Optaget er illustreret som forskellen i påbegyndt anvendelse af rTMS-behandling som følge af en positiv anbefaling.

Figur 2 – Forskel i påbegyndt anvendelse af intervention som følge af en positiv anbefaling over en femårige tidshorisont. Mørkeblå søjle illustrerer antal nyopstartede pr år uden en positiv anbefaling (nuværende markedsscenarie). De grønne søjler i forskellige nuancer illustrerer det årlige antal nyopstartede patienter i behandling i det nye scenarie.



5.6.2 Beregning af antal TMS maskiner ud fra estimeret kapacitet

Nedenstående tabel illustrerer den kapacitetsberegning der er anvendt til at estimere antallet af TMS-maskiner, der er behov for at indkøbe årligt på nationalt plan til anvendelse i BIA'ens hovedanalyse.

Til BIA'ens tilhørende følsomhedsanalyser, er samme kapacitetsberegning anvendt, men der er ændret i det beregnede gennemsnitlige antal nyopstartede patienter pr år over BIA'ens løbetid, svarende til det scenarie som undersøges i den enkelte følsomhedsanalyse. Det gælder for følsomhedsanalyserne 1a, 1b, 3a og 3b at der har været behov for at beregne et nyt antal TMS-maskiner til indkøb på nationalt plan.

Tabel 13 – Estimerer der anvendes til at beregne det forventede antal af TMS-maskiner der bør indkøbes pr år i budgetkonsekvensanalysen mhp. at dække behovet svarende til det forventede antal nye patienter der starter i behandling hvert år. Estimerer der er markeret med **fed** indgår i beregninger af kapacitet pr TMS maskine.

Beregning af antal TMS maskiner ud fra estimater om behandlingskapacitet pr maskine	Estimat	Kilde
Vægtet antal behandlinger pr. dag pr. maskine pba. de tre anvendte protokoller*	19,2	Beregnet pba. vægtet anvendelse af tre rTMS protokoller
iTBS behandlinger pr dag pr maskine. Anvendes ved 60% behandlinger	24	Estimeret af fagudvalg
HF rTMS behandlinger pr dag pr maskine. Anvendes ved 20% behandlinger	12	Estimeret af fagudvalg
LF rTMS behandlinger pr dag pr maskine. Anvendes ved 20% behandlinger	12	Estimeret af fagudvalg

behandlingsdage pr. år	260	Estimeret af fagudvalg
Antal behandlinger der maksimalt kan udføres pr. maskine pr. år (=19,2*260)	4992	Beregning pba. estimeret antal behandlinger pr dag pr maskine samt antal behandlingsdage om året
Behandlinger pr. patient (akut forløb og udtrappingsforløb)	41	Estimeret af fagudvalg
Antal unikke patientforløb pr. maskine pr. år (=4992/41)	122	Beregning pba. estimeret antal behandlingsdage pr år pr maskine samt antal behandlinger pr patient
Gennemsnitlig antal nyopstartede patienter pr år over BIA'ens løbetid	492	Beregnet pba. patientpopulationen og de antaget markedsscenerier
Antal TMS-maskiner der bør indkøbes på nationalt plan (=492/122)	4	Anvendes til BIA'ens hovedanalyse til beregning af udgift forbundet med indkøb af TMS-maskiner pr år de næste fem år.
Følsomhedsanalyse 1a - Antal TMS-maskiner der bør indkøbes på nationalt plan pr. år	3	Anvendes til BIA'ens følsomhedsanalyse til beregning af udgift forbundet med indkøb af TMS-maskiner pr år de næste fem år.
Følsomhedsanalyse 1b - Antal TMS-maskiner der bør indkøbes på nationalt plan pr. år	6	Anvendes til BIA'ens følsomhedsanalyse til beregning af udgift forbundet med indkøb af TMS-maskiner pr år de næste fem år.
Følsomhedsanalyse 3a - Antal TMS-maskiner der bør indkøbes på nationalt plan pr. år	10	Anvendes til BIA'ens følsomhedsanalyse til beregning af udgift forbundet med indkøb af TMS-maskiner pr år de næste fem år.
Følsomhedsanalyse 3b - Antal TMS-maskiner der bør indkøbes på nationalt plan pr. år	1	Anvendes til BIA'ens følsomhedsanalyse til beregning af udgift forbundet med indkøb af TMS-maskiner pr år de næste fem år.

5.6.3 Patientdrevne udgifter

Med patientdrevne udgifter menes der udgifter, hvor antallet af patienter, der behandles, er betydende for den samlede udgiftsakkumulation.

Tabel 14 og Tabel 15 nedenfor for intervention og komparator, angiver udgifterne pr. patient hen over budgetkonsekvensanalysens femårige tidshorisont. Patientdrevne udgifter inkluderer personaleudgifter forbundet med behandling samt medicin og opfølgning.

Udgiftsakkumulationen påvirkes over tid, da udgifter til rTMS-behandling medfører, at man sparer medicinforbrug eller mere invasive behandlinger i forløbet henover BIA'ens tidshorisont.

Udgifter til ECT-behandling indgår i BIA'en som en undgået udgift pr patient pr år i det nye scenarie, ud fra et estimeret antal patienter der hvert år kan undgå ECT-behandling, og i stedet modtage rTMS-behandling. Dette giver en årlig besparelse for regionerne ifm. udførsel af ECT-behandlinger. Besparelsen akkumuleres i takt med at rTMS udbredes over de fem år.

Tabellerne er sat op iht hvordan outputs leveres fra TreeAge, da BIA'en er udarbejdet med udgangspunkt heri.

Tabel 14 – Gennemsnitsudgifter (DKK) pr patient i rTMS-behandling som tillæg til standardbehandling. Omkostninger er opgjort pr. patient over budgetkonsekvensanalysens femårige tidshorizont. Gennemsnitsudgifter pr patient reduceres efter år 1, hvilket afspejler den effekt der opnås af behandlingen. Udgifter de efterfølgende år relaterer sig til bl.a. tilbagefald af sygdom. *Udgifter til ECT-behandling akkumuleres som undgåede udgifter pr patient relativt til det forventede antal patienter der kan undgå ECT-behandling pr år og i stedet modtage rTMS-behandling ved en positiv anbefaling.

Udgiftstype	År 1	År 2	År 3	År 4	År 5
Personaleudgifter rTMS behandling	27.576,80	5.421,81	5.758,69	5.692,01	5.676,94
Standardbehandling (medicin og opfølgning)	73.770,44	48.353,66	48.554,41	48.438,55	48.377,46
ECT behandling*	129.288,60	47.015,84	46.228,80	46.068,08	45.964,86

Tabel 15 – Gennemsnitsudgifter (DKK) pr patient i standardbehandling. Omkostninger er opgjort pr. patient over budgetkonsekvensanalysens femårige tidshorizont. *Udgifter til ECT-behandling akkumuleres som undgåede udgifter pr patient relativt til det forventede antal patienter der kan undgå ECT-behandling pr år og i stedet modtage rTMS-behandling ved en positiv anbefaling.

Udgiftstype	År 1	År 2	År 3	År 4	År 5
Standardbehandling (medicin og opfølgning)	77.764,61	51.737,39	51.619,86	51.499,68	51.439,36
ECT behandling*	129.288,60	47.015,84	46.228,80	46.068,08	45.964,86

5.6.4 Fællesudgifter

Med fællesudgifter menes der udgifter, hvor antallet af patienter, der behandles med intervention og komparator, IKKE er væsentlig betydende for den samlede udgiftsakkumulation. Det gælder indkøb af udstyr, service og uddannelse af personale som ikke er betydende for hvor mange patienter der modtager behandling. Indkøb af TMS-maskiner er beregnet på baggrund af TMS-kapacitetsberegningen der fremgår af Tabel 8 for at tage højde for, at kapaciteten af den enkelte maskine ikke overskrides relativt til antallet af patienter der skal behandles.

Tabel 16 illustrerer de fællesudgifter der er forbundet med interventionen over budgetkonsekvensanalysens femårige tidshorizont. Disse udgifter er ikke afhængige af antallet af patienter, men inkluderer større investeringer som indkøb af udstyr, implementeringsomkostninger såsom oplæring, samt service og vedligeholdelse. Da standardbehandling ikke har nogen fællesudgifter, er denne ikke medtaget i rapporten.

Tabel 16 – Gennemsnitsudgifter (DKK) for fællesudgifter for rTMS-behandling. Omkostninger er opgjort som fællesindkøb i budgetkonsekvensanalysens fem årige tidshorisont.

	År 1	År 2	År 3	År 4	År 5
TMS udstyr					
Årlig service					
Uddannelse af personale	180.000	180.000	180.000	180.000	180.000
Total	2.080.000	2.140.000	2.200.000	2.260.000	2.320.000

5.6.5 Basecase resultater

Nedenstående tabeller præsenterer basecase resultaterne. Tabellerne viser de årlige udgifter samt den samlede femårige budgetkonsekvens.

5.6.5.1 Personaleudgifter til rTMS-behandling

Tabel 17 – Akkumulerede personaleudgifter (DKK) for rTMS-behandling. Udgifter er opgjort over en femårig tidshorisont.

År	Difference opstart i år 1	Difference opstart i år 2	Difference opstart i år 3	Difference opstart i år 4	Difference opstart i år 5	Personaleudgifter rTMS behandling
2025	9.324.584					9.324.584
2026	1.833.286	15.291.902				17.125.189
2027	1.947.193	3.006.508	15.857.204			20.810.905
2028	1.924.647	3.193.310	3.117.651	16.390.214		24.625.822
2029	1.919.552	3.156.335	3.311.359	3.222.445	16.932.672	28.542.361
Total 5-årig budgetkonsekvens						100.428.861

5.6.5.2 Standardbehandling (medicin og opfølgning)

Tabel 18 – Akkumulerede udgifter (DKK) forbundet med standardbehandling (medicin og opfølgning). udgifter er opgjort over en femårig tidshorisont.

År	Difference opstart i år 1	Difference opstart i år 2	Difference opstart i år 3	Difference opstart i år 4	Difference opstart i år 5	Standardbehandling (medicin og opfølgning)
2025	-1.350.553					-1.350.553

2026	-1.144.146	-2.214.847				-3.358.993
2027	-1.036.523	-1.876.348	-2.296.724			-5.209.595
2028	-1.035.062	-1.699.852	-1.945.712	-2.373.924		-7.054.550
2029	-1.035.325	-1.697.456	-1.762.691	-2.011.113	-2.452.492	-8.959.078
Total 5-årig budgetkonsekvens						-25.932.769

5.6.5.3 Personaleudgifter og udstyr til ECT-behandling

Med antagelse om, at en bredere anvendelse af rTMS-behandling resulterer i en reduceret anvendelse af ECT-behandling, betyder det, at nogle få estimerede patienter pr år

Tabel 19 – Akkumulerede personaleudgifter og udstyr til ECT-behandling (DKK). Omkostninger er opgjort over en femårig tidshorisont.

År	Difference opstart i år 1	Difference opstart i år 2	Difference opstart i år 3	Difference opstart i år 4	Difference opstart i år 5	ECT behandling
2025	-1.324.045					-1.324.045
2026	-481.489	-3.442.516				-3.924.005
2027	-473.429	-1.251.872	-5.560.987			-7.286.288
2028	-471.783	-1.230.916	-2.022.255	-7.679.459		-11.404.412
2029	-470.726	-1.226.636	-1.988.402	-2.792.638	-9.797.930	-16.276.333
Total 5-årig budgetkonsekvens						-40.215.083

5.6.5.4 TMS udstyr

Udgifter forbundet med indkøb af TMS-udstyr baseres på tidligere indkøb i regionerne. Med en antagelse om, at der i gennemsnit i BIA'en indkøbes fire TMS-maskiner årligt på nationalt plan, resulterer det i en femårig budgetkonsekvens på [REDACTED] DKK.

Tabel 20 – Udgifter (DKK) til TMS udstyr. Udgifter er opgjort over en femårig tidshorisont. Angiver indkøb af fire TMS-maskiner pr år, svarende til den nødvendige kapacitet af nyopstartede patienter pr år.

År	TMS udstyr
2025	[REDACTED]
2026	[REDACTED]
2027	[REDACTED]

2028	████████
2029	████████
Total 5-årig budgetkonsekvens	████████

5.6.5.5 Årlig service af TMS udstyr

Service af TMS-udstyr koster ca. ████████ DKK årligt. TMS-udstyr bør serviceres hvert år indenfor udstyrets levetid, hvorfor denne udgift akkumuleres i takt med at der implementeres flere TMS-maskiner i regionerne. Over en fem-årig periode er der regionale udgifter til service af TMS-udstyr på ca. ████████ DKK.

Tabel 21 – Udgifter (DKK) forbundet med årlig service af TMS udstyr. Udgifter er opgjort over en femårig tidshorisont.

År	Årlig service af TMS udstyr
2025	████████
2026	████████
2027	████████
2028	████████
2029	████████
Total 5-årig budgetkonsekvens	████████

5.6.5.6 Certificering af personale i rTMS-behandling

Udgifter til certificering af personale i BIA'ens hovedanalyse inkluderer en antagelse om, at der er behov for at certificere tre sundhedsprofessionelle pr. maskine. Udgift for certificeringskursus koster pr person ca. 15.000 DKK. I analysen er det endvidere antaget, at der i gennemsnit pr år er behov for at indkøbe fire TMS-maskiner. Over en fem-årig periode akkumuleres udgiften for certificering sig til ca. 900.000 DKK.

Tabel 22 – Udgifter (DKK) forbundet med certificering af personale i rTMS-behandling. Udgifter er opgjort over en femårig tidshorisont.

År	Certificering af personale
2025	180.000
2026	180.000
2027	180.000
2028	180.000
2029	180.000
Total 5-årig budgetkonsekvens	900.000

© Behandlingsrådet, 2024.

Udgivelsen kan frit refereres med tydelig kildeangivelse.

www.behandlingsraadet.dk

Niels Jernes Vej 6A, 9220 Aalborg Ø

Versionsnummer: 1.0

Sprog: Dansk

Udgivet af Behandlingsrådet, d. [d. måned år]

Behandlingsrådet